



CLAMPS

*STANDARD, HEAVY AND TWIN
TUBE, PIPE AND HOSE CLAMPS*

TABLE OF CONTENTS

INTRODUCTION

| | |
|-----------------------|----|
| Evolution of clamps | 04 |
| Piping vs tubing | 06 |
| Features and Benefits | 08 |

STANDARD SERIES

| | |
|----------------------------|-----------|
| COMPLETE CLAMP KITS | 10 |
| Pipe | 11 |
| Tube | 11 |
| COMPONENTS | 12 |
| Bodies | 12 |
| Pipe & Tube | 12 |
| Hose | 14 |
| Rubber Insert | 15 |
| Weld Plates | 16 |
| Single | 16 |
| Elongated | 17 |
| Twin | 18 |
| Group | 19 |

| | |
|-------------------------|----|
| Plates, Bolts and Rails | 20 |
|-------------------------|----|

| | |
|--------------------------------|----|
| Mounting Rail | 20 |
| Hexagonal Rail Mount Nut | 20 |
| Strut Channel Mounting Adapter | 21 |
| Stacking Plate | 22 |
| Stacking Bolt | 23 |
| Cover Plate | 22 |
| Hex Head Bolt | 23 |

HEAVY SERIES



| | |
|----------------------------|-----------|
| COMPLETE CLAMP KITS | 24 |
| Pipe | 25 |
| Tube | 25 |
| COMPONENTS | 26 |
| Bodies | 26 |
| Pipe & Tube | 26 |
| Hose | 28 |
| Rubber Insert | 29 |



| | | | |
|--------------------------------|----|--------------------------------|----|
| Weld Plates | 30 | Bodies | 40 |
| Single | 30 | Pipe & Tube | 40 |
| Double Clamp | 31 | Hose | 41 |
| Elongated | 32 | Weld Plates | 42 |
| Elongated Double Clamp | 33 | Single | 42 |
| Plates, Bolts and Rails | 34 | Group | 43 |
| Mounting Rail | 34 | Plates, Bolts and Rails | 44 |
| Hexagonal Rail Mount Nut | 34 | Mounting Rail | 44 |
| Strut Channel Mounting Adapter | 35 | Hexagonal Rail Mount Nut | 44 |
| Stacking Plate | 36 | Strut Channel Mounting Adapter | 45 |
| Stacking Bolt | 37 | Stacking Plate | 46 |
| Cover Plate | 36 | Stacking Bolt | 47 |
| Cover Plate Double Clamp | 36 | Cover Plate | 46 |
| Hex Head Bolt | 37 | Hex Head Bolt | 47 |

TWIN SERIES

| | |
|---------------------|----|
| COMPLETE CLAMP KITS | 38 |
| COMPONENTS | 40 |

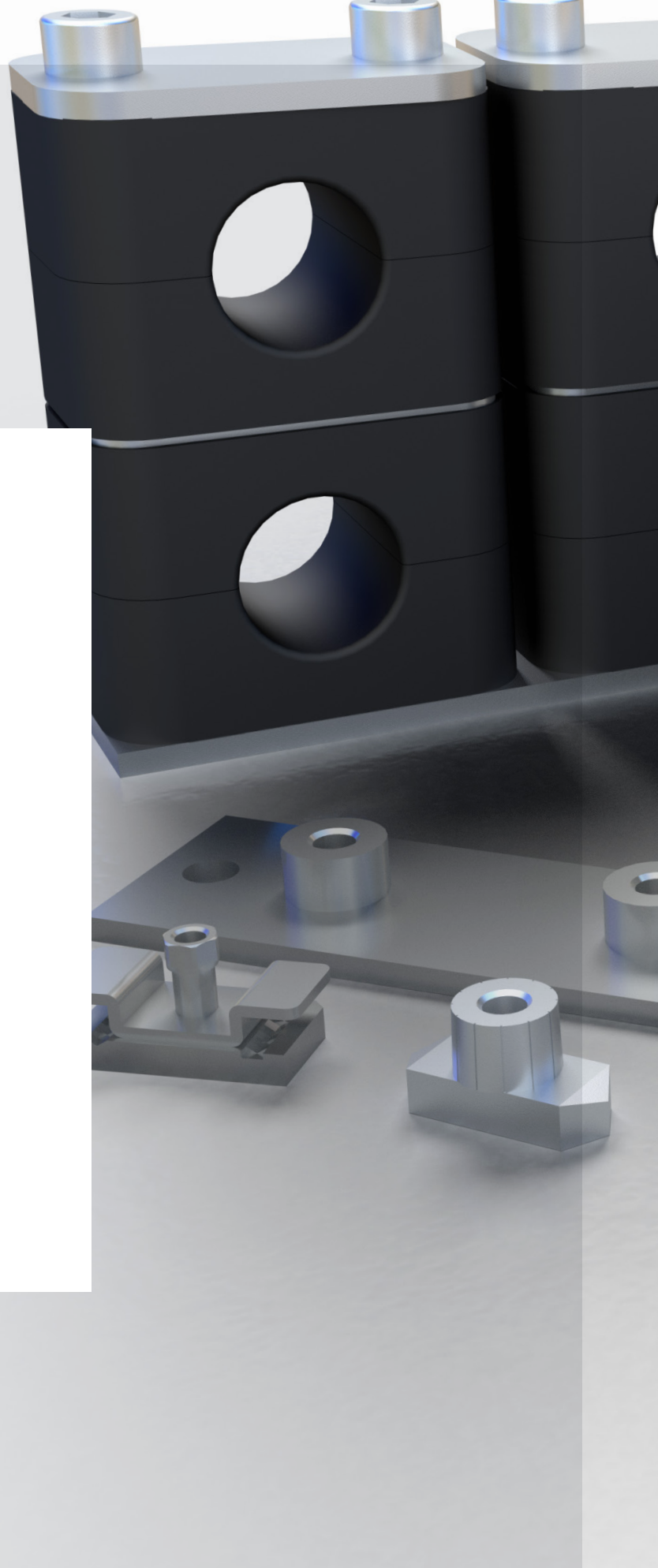
 **California Proposition 65 Warning** 
WARNING: This product can expose you to chemicals including Lead, which are known to the State of California to cause cancer and birth defects or other reproductive harm.
For more information: www.P65Warnings.ca.gov



EVOLUTON OF CLAMPS

Today, clamps are widely used for providing simple, reliable dampening support for tubes, pipes, hoses and conduits in industrial and mobile hydraulic systems, process industries and electrical construction.

In many installations, pipe, hose or tube clamping is required to lessen vibration, provide rigid support and prevent loosening of the joints and welds. Brennan clamps, with their multi-rib design, prevent vibration transmission. They also provide support in both vertical and horizontal directions. This support relieves the stress caused by unequal movements in the pipe, hose or tubing.



STANDARD SERIES CLAMPS

Standard Series Clamps are typically used in installations with average load and moderate vibration. These clamps are ideal for applications like mobile equipment, machine tools and instrumentation plumbing.

On equipment with little to no vibration, Standard Series Clamps can be used without the cover plate to reduce cost.

Brennan Standard Series Clamps can be mounted using weld-plates or mounted on standard rails using rail nuts. Rails are an easy way to mount multiple clamps on a single base. Rails also allow flexibility when the pitch between the pipe or tubing is uneven. Rail-mounted pipe clamps can also be used with or without the cover plate, depending on the application.

Standard Series Clamps are available for pipe and tube sizes up to 4" O.D. Mounting rail is available in 1 or 2 meter lengths.

HEAVY SERIES CLAMPS

Brennan Heavy Series Clamps are great for higher load and higher vibration installations. Typical applications include primary metal manufacturing and heavy duty construction or mining equipment.

Heavy Series Clamps can be mounted using weld-plates. Sizes up to 2 3/4" O.D. can also be mounted using heavy rails using rail nuts. Brennan's heavy mounting rail is available in 1 or 2 meter lengths and is economical for multiple mountings on a single rail. Heavy Series Clamps are available for pipe and tube sizes up to 5" O.D.

TWIN SERIES CLAMPS

Twin Series Clamps are ideal for installations with closely placed lines. Typical applications include general industrial use and mobile applications with moderate vibration.

The Twin Series can be mounted using a weld-plate or mounting rail with rail nuts. Twin Series Clamps can be used with Standard Series mounting rail and are available in pipe and tube sizes up to 1.65" O.D.

Standard, Heavy and Twin Series Clamps can all be used in many mounting configurations for compact, efficient plumbing in installations with multiple lines stacked vertically or horizontally. They can also be installed back-to-back in conditions of extreme vibration.



PIPING vs TUBING

DIFFERENCE/COMPARISON

PIPE: SIZE AND IDENTIFICATION

For pipe, the determining reference is:

- A** The **NB** (nominal bore) or **NPS** (nominal pipe size) which loosely refers to inner diameter
- B** **THE SCHEDULE** of the pipe denotes the wall thickness of the pipe

EXAMPLE:

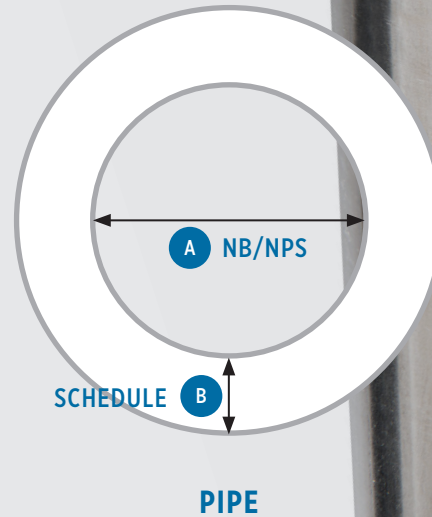
For an ASME/ANSI B 36.10 Welded and Seamless Wrought Steel Pipe the inside diameter – ID – of a NPS 2 inches pipe with:

2" Schedule 40 is 2.067"

2" Schedule 80 is 1.939"

The outside diameters of both schedules are constant at 2.375". Therefore, the "Schedule" of the pipe determines the thickness of the pipe and, therefore, the ID.

Pipe generally has looser tolerances, is always cylindrical and is cheaper to produce than tubing.



PIPE

A pipe and a tube are both, by definition, hollow cylinders used to pass liquids through them. Both are created to be rigid and permanent contributions from an engineering standpoint.

- | | |
|---|---|
| 1 | Identified by NB (nominal bore). |
| 2 | Wall thickness of Pipe is determined by the schedule i.e. sch. 10, sch. 80, sch. 160, etc. |
| 3 | Lower schedule no. – wall thickness is lower. Higher schedule no. – wall thickness is higher. |
| 4 | Pipe is fabricated for most of sizes and drawn for lower sizes. |
| 5 | Pipe is always cylindrical. |
| 6 | Pipe starts from 1/8" (6mm) to 24" NB or 36". Fabricated pipe can be any diameter. |
| 7 | O.D. of pipe is constant/fixed regardless of the pipe's schedule. |



TUBE: SIZE AND IDENTIFICATION

For TUBING, the determining reference is:

- A** The **OD** (outside diameter) which is specified
- B** **THE WALL THICKNESS** of the tube

Tube dimensions are “actual” and not “nominal.”

Unlike pipe, which is always cylindrical, tubing can be round, square, rectangular or any shape of hollow material of uniform thickness.

Tolerances for tubing are tighter than those for pipe and tubing is generally more expensive to produce.

PIPE VS. TUBE: IMPLICATIONS

The decision to use tube or pipe depends on the project engineer. Choice to use pipe or tube impacts the purchase of associated items such as clamps, fittings, etc.

For the selection of CLAMPS, the user will designate PIPE CLAMPS or TUBE CLAMPS depending on if they are using tubing or pipe. Apart from nomenclature and sizing, there is no difference between the form and function of a TUBE CLAMP or a PIPE CLAMP.

TUBE

| | |
|---|---|
| 1 | Identified by outside diameter. |
| 2 | Wall thickness of a tube is defined by the specific measurement or gauge. |
| 3 | Lower gauge no. – wall thickness is higher. Higher gauge no. – wall thickness is lower. |
| 4 | Tubing is always drawn and never fabricated. |
| 5 | A tube can be circular, square, oval, rectangular, etc. |
| 6 | Tubing starts from 1/8” to max. 4” or 6” for eg: 1/4” OD x .035” wall thickness. |

CLAMPS

FEATURES & BENEFITS

FEATURES OF CLAMPS

- Simple to operate
- Easy to install
- Can accommodate various temperature ranges
- Make for quick, easy pipe installation and layout
- Very high impact resistance
- Noise reducing
- Good appearance
- Shock-absorption
- Vibration dampening
- Stackable and adjustable
- Prevents loosening of joints

HOW TO SELECT CLAMPS

STYLE OF THE BODY

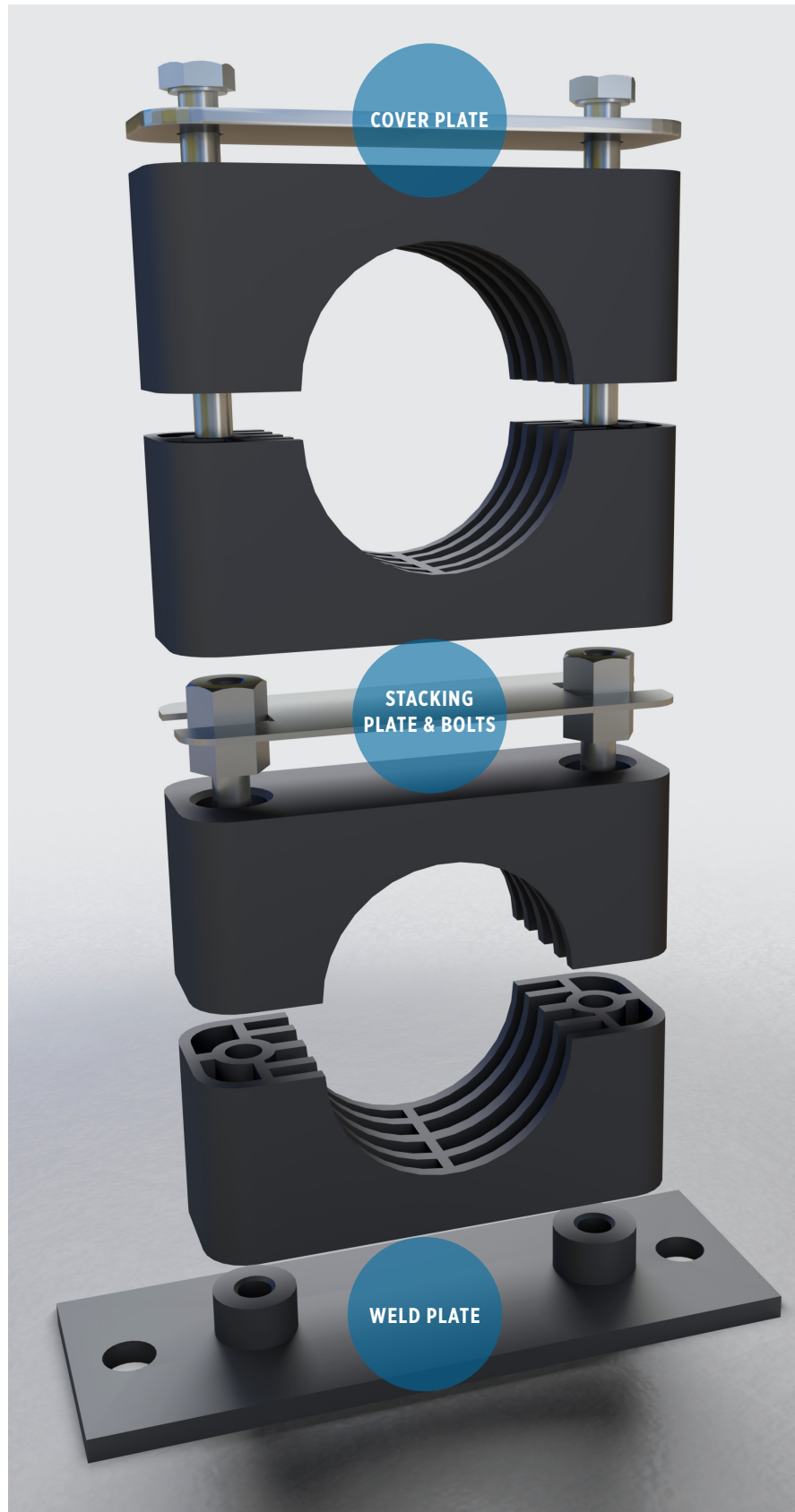
- Can be slotted, smooth or with a rubber insert for maximum vibration dampening.

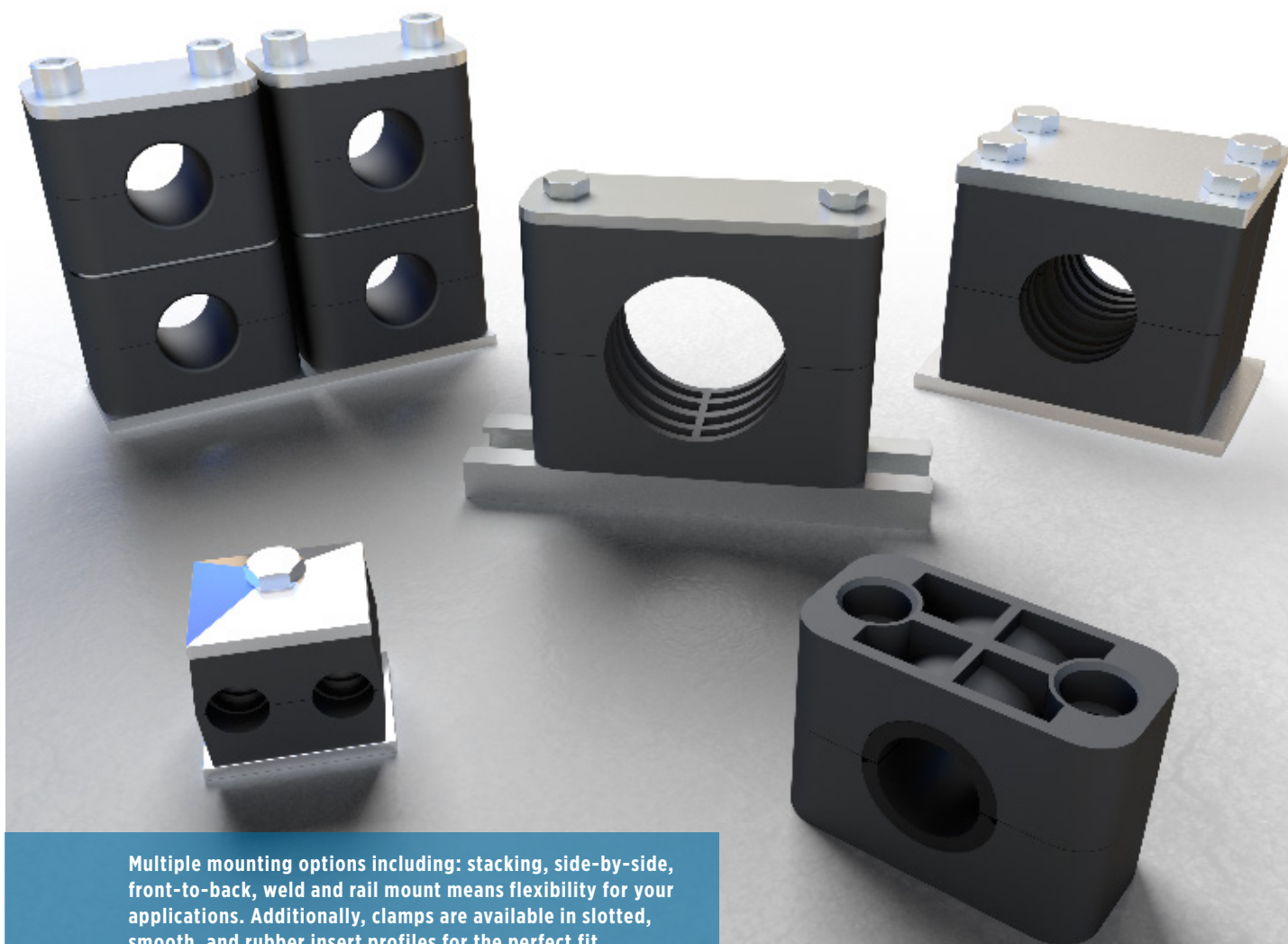
MATERIAL OF THE METALLIC PARTS

- Carbon steel untreated, phosphate treated or zinc-nickel plated and stainless steel.

USAGE CRITERIA

- Type of application – for instance, applications in steel mills may require heavy clamps
- Pressure rating during flow – higher pressure causes more vibration
- Economy in terms of space – carefully consider how your clamp assemblies need to be designed





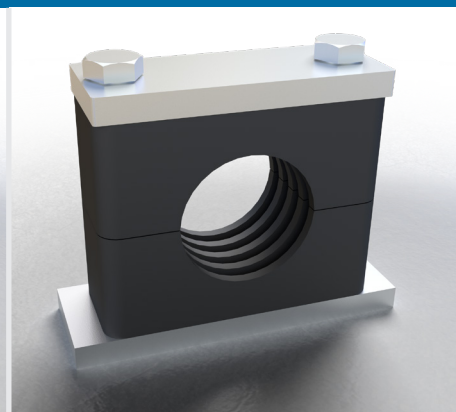
Multiple mounting options including: stacking, side-by-side, front-to-back, weld and rail mount means flexibility for your applications. Additionally, clamps are available in slotted, smooth, and rubber insert profiles for the perfect fit.

BRENNAN CLAMPS: RANGE



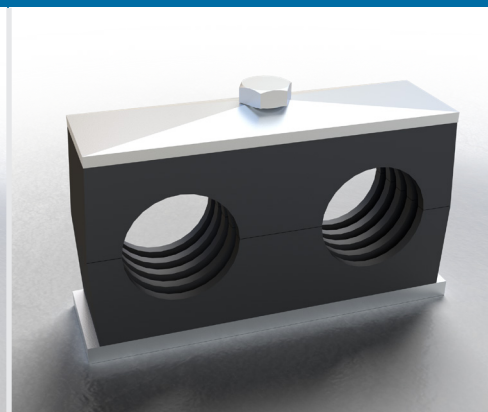
STANDARD SERIES PIPE / TUBE CLAMPS

Clamp bodies in polypropylene with hardware in unplated steel, phosphate treated, zinc-nickel plated or 304 or 316 stainless steel, imperial or metric.



HEAVY SERIES PIPE / TUBE CLAMPS

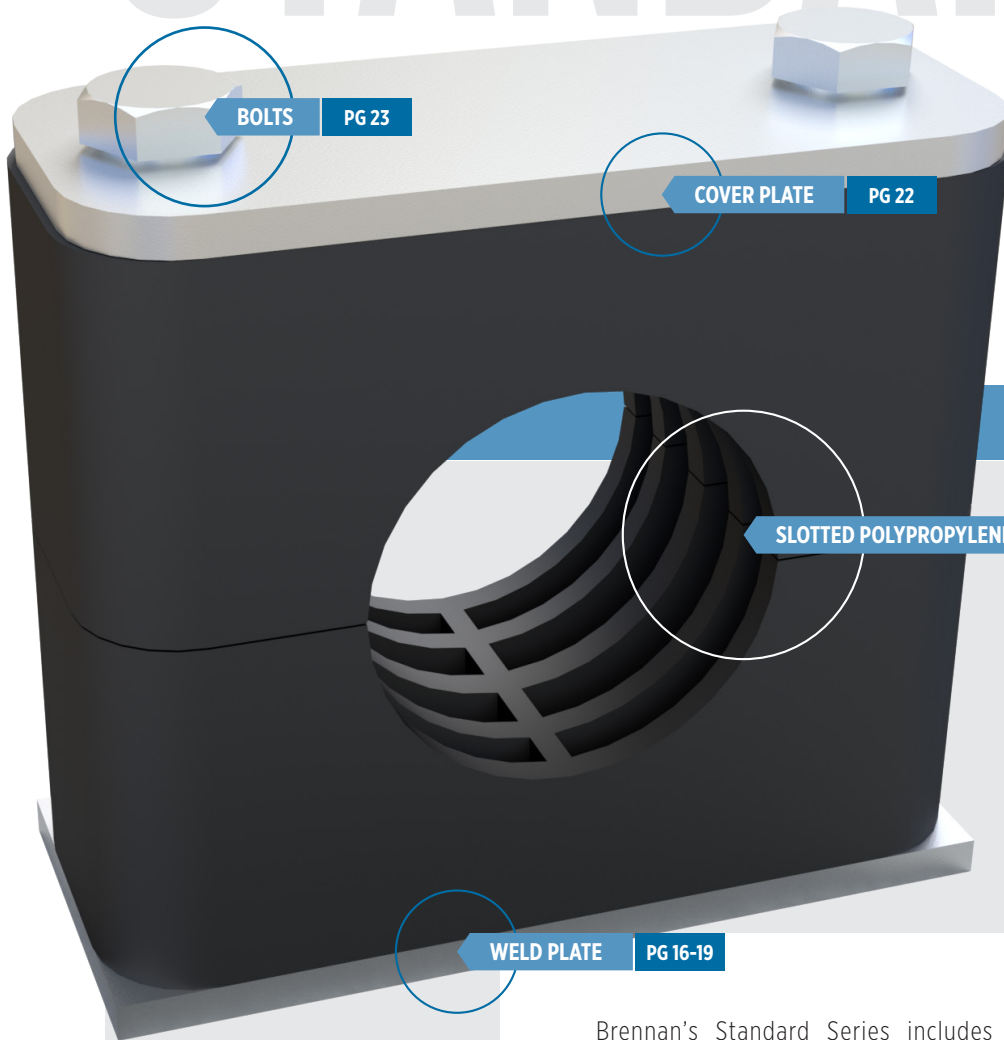
Clamp bodies in polypropylene with hardware in unplated steel, phosphate treated, zinc-nickel plated or 304 or 316 stainless steel, imperial or metric.



TWIN SERIES CLAMPS

Clamp bodies in polypropylene with hardware in unplated steel, phosphate treated, zinc-nickel plated or 304 or 316 stainless steel, imperial or metric.

STANDARD SERIES



COMPLETE CLAMP KIT

KIT CONTAINS:

SLOTTED POLYPROPYLENE BODY

PHOSPHATE TREATED CARBON STEEL WELD PLATE

ZINC-NICKEL PLATED COVER PLATE

ZINC-NICKEL PLATED BOLTS

Brennan's Standard Series includes complete clamp kits (bodies plus hardware) and a full line of individual components, so you can assemble the configuration that best meets your needs.

Standard Series clamp bodies are in polypropylene or polyamide and are available in slotted, smooth or rubber insert profiles. Hardware is available in unplated steel, phosphate treated, zinc-nickel plated, and both 304 and 316 stainless steel. These choices allow you to select a configuration that is perfectly tailored to your application.

Clamps are available in both imperial and metric sizes, according to groups. Please be sure to choose hardware and bodies from the same group for the best fit.

STANDARD SERIES: COMPLETE CLAMP KITS

- Everything you need in one package: clamp body, weld plate, cover plate and bolts with only one part number for simplified ordering.
- Stainless kits are also available, see below for ordering instructions.
- Kit bodies are in polypropylene with slotted profile only.

COMPLETE KIT

FOR TUBING APPLICATIONS

| PART NO. | GROUP | ØD (in.) |
|---------------|-------|----------|
| CT-S1-04-CS-A | 1 | 1/4 |
| CT-S1-06-CS-A | | 3/8 |
| CT-S2-08-CS-A | 2 | 1/2 |
| CT-S2-10-CS-A | | 5/8 |
| CT-S3-12-CS-A | 3 | 3/4 |
| CT-S3-14-CS-A | | 7/8 |
| CT-S3-16-CS-A | 5 | 1 |
| CT-S5-20-CS-A | | 1 1/4 |
| CT-S5-24-CS-A | 6 | 1 1/2 |
| CT-S6-28-CS-A | | 1 3/4 |
| CT-S6-32-CS-A | 7 | 2 |
| CT-S7-36-CS-A | | 2 1/4 |
| CT-S7-40-CS-A | 8 | 2 1/2 |
| CT-S7-44-CS-A | | 2 3/4 |
| CT-S7-48-CS-A | 8 | 3 |
| CT-S8-56-CS-A | | 3 1/2 |
| CT-S8-64-CS-A | 8 | 4 |

- Kit contains: slotted polypropylene body, phosphate treated carbon steel weld plate, zinc-nickel plated cover plate and bolts.
- For alternate finishes/materials replace -CS in the above part numbers with the following codes: -S4 304 stainless steel, -S6 316 stainless steel. Consult factory for availability

COMPLETE KIT

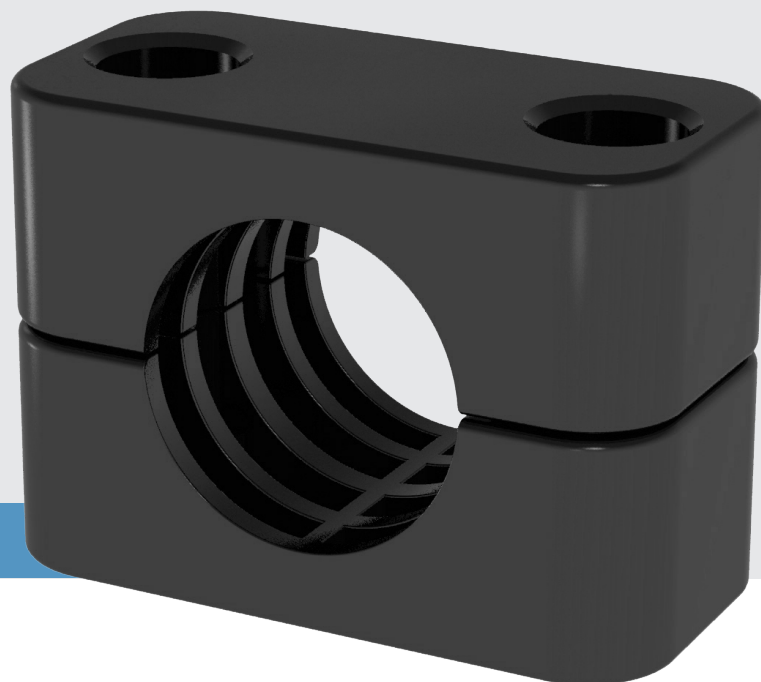
FOR PIPE APPLICATIONS

| PART NO. | GROUP | NB* (in.) |
|---------------|-------|-----------|
| CP-S2-04-CS-A | 2 | 1/4 |
| CP-S2-06-CS-A | | 3/8 |
| CP-S3-08-CS-A | 3 | 1/2 |
| CP-S4-12-CS-A | 4 | 3/4 |
| CP-S5-16-CS-A | 5 | 1 |
| CP-S5-20-CS-A | | 1 1/4 |
| CP-S6-24-CS-A | 6 | 1 1/2 |
| CP-S7-32-CS-A | 7 | 2 |
| CP-S7-40-CS-A | | 2 1/2 |
| CP-S8-48-CS-A | 8 | 3 |

- Kit contains: slotted polypropylene body, phosphate treated carbon steel weld plate, zinc-nickel plated cover plate and bolts.
- For alternate finishes/materials replace -CS in the above part numbers with the following codes: -S4 304 stainless steel, -S6 316 stainless steel. Consult factory for availability
- Nominal bore*

STANDARD CLAMP BODIES

- The Standard Series is available with slotted, smooth or rubber insert profiles in sizes for tube, pipe and hose.
- Brennan slotted profile clamp bodies are a proven product for safe installation of rigid pipes and tubes. Available in common sizes, they have excellent vibration and noise reduction as well as weather resistance.



SLOTTED PROFILE

PIPE

DIMENSIONS IN INCHES

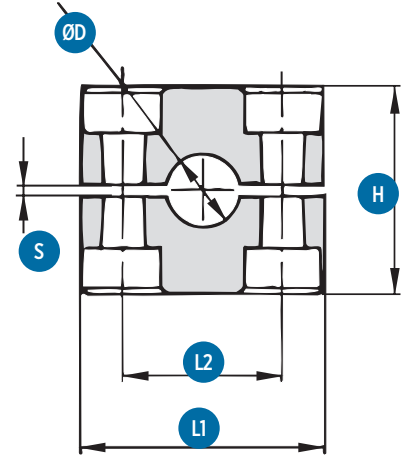
| PART NO. | NB* | GROUP | L1 | L2 | H | S min | W |
|----------------|-------|-------|------|------|------|-------|------|
| ACB-SP2-P04-PP | 1/4 | 2 | 1.65 | 1.02 | 1.3 | 0.02 | 1.18 |
| ACB-SP2-P06-PP | 3/8 | | | | | | |
| ACB-SP3-P08-PP | 1/2 | 3 | 1.97 | 1.3 | 1.42 | 0.02 | 1.18 |
| ACB-SP4-P12-PP | 3/4 | 4 | 2.32 | 1.57 | 1.65 | 0.02 | 1.18 |
| ACB-SP5-P16-PP | 1 | 5 | 2.8 | 2.05 | 2.28 | 0.03 | 1.18 |
| ACB-SP5-P20-PP | 1 1/4 | | | | | | |
| ACB-SP6-P24-PP | 1 1/2 | 6 | 3.39 | 2.6 | 2.6 | 0.03 | 1.18 |
| ACB-SP7-P32-PP | 2 | 7 | 4.76 | 3.7 | 3.66 | 0.03 | 1.18 |
| ACB-SP7-P40-PP | 2 1/2 | | | | | | |
| ACB-SP8-P48-PP | 3 | 8 | 5.79 | 4.72 | 4.65 | 0.03 | 1.18 |

- Standard clamp bodies are black polypropylene with slotted inside surface profile.
- For polyamide clamp bodies substitute -PA for -PP above (ACB-SP5-P16-PP becomes ACB-SP5-P16-PA)
- Nominal Bore*

TUBE

DIMENSIONS IN INCHES

| PART NO. | ØD | GROUP | L1 | L2 | H | S _{min} | W |
|----------------|-------|-------|------|------|------|------------------|------|
| ACB-SP1-T04-PP | 1/4 | 1 | 1.46 | 0.79 | 1.06 | 0.02 | 1.18 |
| ACB-SP1-T06-PP | 3/8 | | | | | | |
| ACB-SP2-T08-PP | 1/2 | 2 | 1.65 | 1.02 | 1.3 | 0.02 | 1.18 |
| ACB-SP2-T10-PP | 5/8 | | | | | | |
| ACB-SP3-T12-PP | 3/4 | 3 | 1.97 | 1.3 | 1.42 | 0.02 | 1.18 |
| ACB-SP3-T14-PP | 7/8 | | | | | | |
| ACB-SP3-T16-PP | 1 | | | | | | |
| ACB-SP5-T20-PP | 1 1/4 | 5 | 2.8 | 2.05 | 2.28 | 0.03 | 1.18 |
| ACB-SP5-T24-PP | 1 1/2 | | | | | | |
| ACB-SP6-T28-PP | 1 3/4 | 6 | 3.39 | 2.6 | 2.6 | 0.03 | 1.18 |
| ACB-SP6-T32-PP | 2 | | | | | | |
| ACB-SP7-T36-PP | 2 1/4 | 7 | 4.76 | 3.7 | 3.66 | 0.03 | 1.18 |
| ACB-SP7-T40-PP | 2 1/2 | | | | | | |
| ACB-SP7-T44-PP | 2 3/4 | | | | | | |
| ACB-SP7-T48-PP | 3 | | | | | | |
| ACB-SP8-T64-PP | 4 | 8 | 5.79 | 4.72 | 4.65 | 0.03 | 1.18 |



TUBE - METRIC

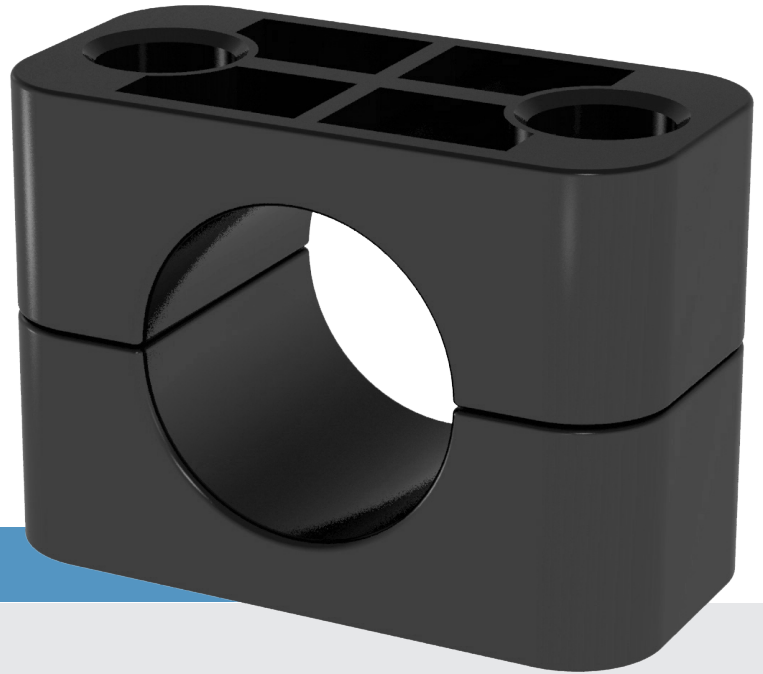
DIMENSIONS IN MM

| PART NO. | ØD | GROUP | L1 | L2 | H | S _{min} | W |
|-----------------|----|-------|----|----|----|------------------|----|
| ACB-SP1-TM06-PP | 6 | 1 | 37 | 20 | 27 | 0.4 | 30 |
| ACB-SP1-TM08-PP | 8 | | | | | | |
| ACB-SP1-TM10-PP | 10 | | | | | | |
| ACB-SP1-TM12-PP | 12 | | | | | | |
| ACB-SP2-TM14-PP | 14 | 2 | 42 | 26 | 33 | 0.6 | 30 |
| ACB-SP2-TM15-PP | 15 | | | | | | |
| ACB-SP2-TM16-PP | 16 | | | | | | |
| ACB-SP2-TM18-PP | 18 | | | | | | |
| ACB-SP3-TM19-PP | 19 | 3 | 50 | 33 | 36 | 0.6 | 30 |
| ACB-SP3-TM20-PP | 20 | | | | | | |
| ACB-SP3-TM22-PP | 22 | | | | | | |
| ACB-SP3-TM25-PP | 25 | | | | | | |
| ACB-SP4-TM28-PP | 28 | 4 | 59 | 40 | 42 | 0.6 | 30 |
| ACB-SP4-TM30-PP | 30 | | | | | | |
| ACB-SP5-TM32-PP | 32 | 5 | 71 | 52 | 58 | 0.8 | 30 |
| ACB-SP5-TM35-PP | 35 | | | | | | |
| ACB-SP5-TM38-PP | 38 | | | | | | |
| ACB-SP5-TM40-PP | 40 | | | | | | |
| ACB-SP5-TM42-PP | 42 | | | | | | |

- Standard clamp bodies are black polypropylene with slotted inside surface profile.
- For polyamide clamp bodies substitute -PA for -PP above (ACB-SP3-T16-PP becomes ACB-SS3-T16-PA)

STANDARD CLAMP BODIES

- Smooth profile clamp bodies are perfect for use with hoses and cables. They have chamfered edges to reduce wear and damage.



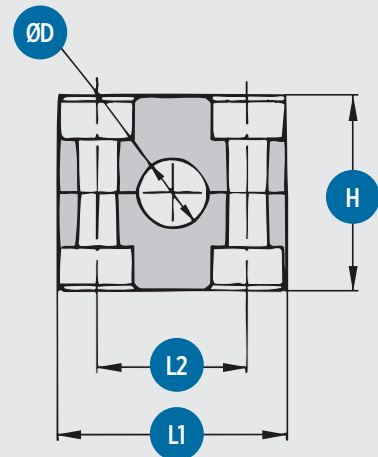
SMOOTH PROFILE

HOSE

DIMENSIONS IN INCHES

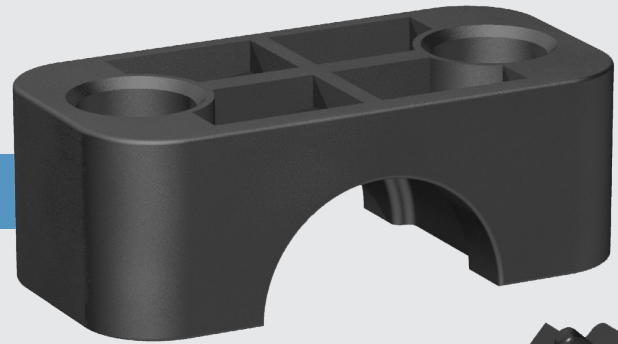
| PART NO. | NB* | GROUP | L1 | L2 | H | W | ØD |
|----------------|-------|-------|------|------|------|------|------|
| ACB-SS3-H04-PP | 1/4 | 3 | 1.97 | 1.30 | 1.4 | 1.18 | .53 |
| ACB-SS3-H06-PP | 3/8 | | | | | | .69 |
| ACB-SS3-H08-PP | 1/2 | | | | | | .81 |
| ACB-SS3-H10-PP | 5/8 | | | | | | .94 |
| ACB-SS5-H12-PP | 3/4 | 5 | 2.80 | 2.05 | 2.22 | 1.18 | 1.09 |
| ACB-SS5-H16-PP | 1 | | | | | | 1.41 |
| ACB-SS5-H20-PP | 1 1/4 | | | | | | 1.72 |
| ACB-SS6-H24-PP | 1 1/2 | 6 | 3.39 | 2.60 | 2.54 | 1.18 | 1.96 |

- Standard clamp bodies are black polypropylene with smooth inside surface profile.
- For polyamide clamp bodies substitute -PA for -PP above (ACB-SS3-H04-PP becomes ACB-SS3-H04-PA)
- Nominal Bore, Hydraulic hose SAE 100 R1 AT *



- For the ultimate in noise isolation or for the most protective installation of delicate hoses or cables use Brennan clamp bodies with soft rubber inserts.

BODY WITH RUBBER INSERT

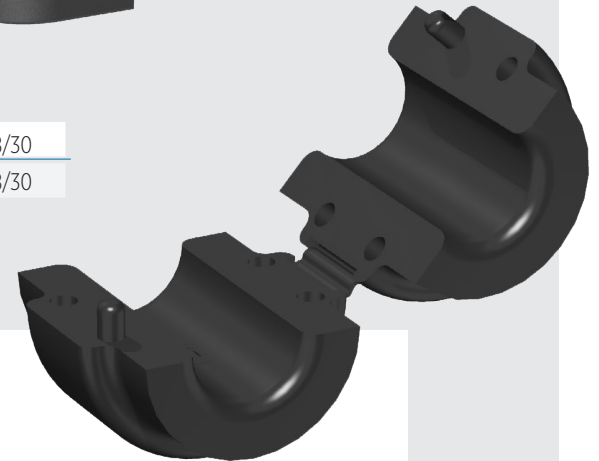


BODIES FOR INSERTS

DIMENSIONS IN INCHES/MM

| PART NO. | GROUP | ØD | L1 | L2 | H | W |
|-------------|-------|--------|---------|---------|-----------|---------|
| ACB-SRI4-PP | 4 | .98/25 | 2.32/59 | 1.57/40 | 1.62/41.2 | 1.18/30 |
| ACB-SRI6-PP | 6 | 1.5/38 | 3.39/86 | 2.6/66 | 2.54/64.5 | 1.18/30 |

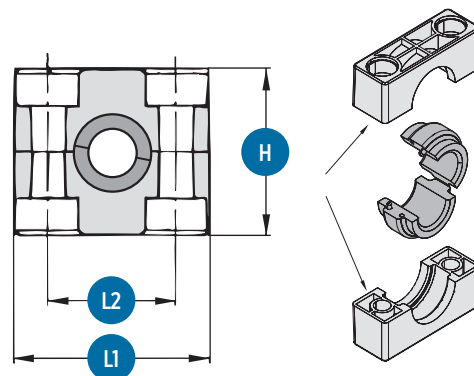
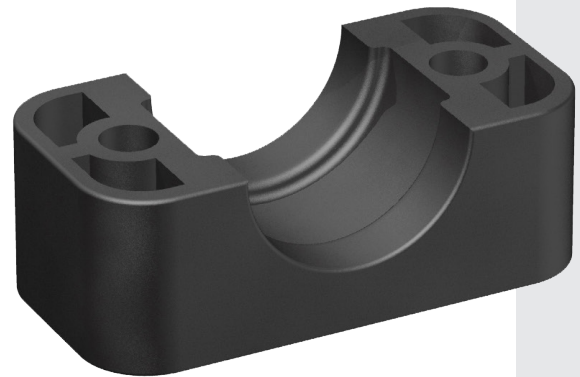
- Clamp bodies are black polypropylene profiled for use with rubber inserts.
- Match the group number of your clamp bodies with your rubber inserts for correct fit.



RUBBER INSERTS

DIMENSIONS IN INCHES/MM

| PART NO. | ØD IN | ØD MM | GROUP |
|--------------|-------|-------|-------|
| ARI-S4-M06 | | 6 | 4 |
| ARI-S4-M08 | 5/16 | 8 | |
| ARI-S4-M10 | | 10 | |
| ARI-S4-M12 | | 12 | |
| ARI-S4-M12.7 | 1/2 | 12.7 | |
| ARI-S4-M14 | | 14 | |
| ARI-S4-M15 | | 15 | |
| ARI-S4-M16 | 5/8 | 16 | |
| ARI-S4-M17.2 | | 17.2 | |
| ARI-S4-M18 | | 18 | |
| ARI-S4-M19 | 3/4 | 19 | 6 |
| ARI-S6-M20 | | 20 | |
| ARI-S6-M21.3 | | 21.3 | |
| ARI-S6-M22 | 7/8 | 22 | |
| ARI-S6-M25 | | 25 | |
| ARI-S6-M26.9 | | 26.9 | |
| ARI-S6-M28 | | 28 | |
| ARI-S6-M30 | | 30 | |
| ARI-S6-M32 | 1 1/4 | 32 | |

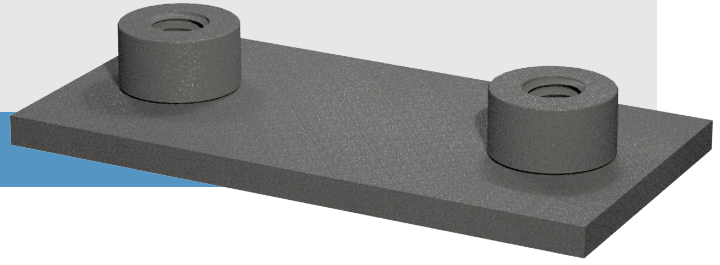


- Inserts are black thermoplastic elastomer.
- Match the group number of your clamp bodies with your inserts for correct fit.

STANDARD WELD PLATES

SINGLE AND ELONGATED

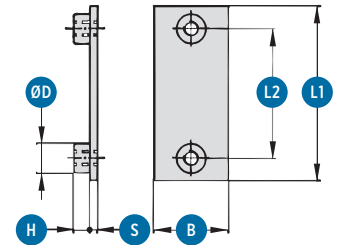
SINGLE WELD PLATE



SINGLE

DIMENSIONS IN INCHES

| PART NO. | GROUP | L1 | L2 | B | S | H | ØD |
|--------------|-------|------|------|------|-----|-----|-----|
| AWP-S1-U-PCS | 1 | 1.42 | 0.79 | 1.18 | .12 | .26 | .47 |
| AWP-S2-U-PCS | 2 | 1.65 | 1.02 | 1.18 | .12 | .26 | .47 |
| AWP-S3-U-PCS | 3 | 1.97 | 1.30 | 1.18 | .12 | .26 | .47 |
| AWP-S4-U-PCS | 4 | 2.36 | 1.57 | 1.18 | .12 | .26 | .47 |
| AWP-S5-U-PCS | 5 | 2.80 | 2.05 | 1.18 | .12 | .26 | .47 |
| AWP-S6-U-PCS | 6 | 3.46 | 2.60 | 1.18 | .12 | .26 | .47 |
| AWP-S7-U-PCS | 7 | 4.80 | 3.70 | 1.18 | .20 | .26 | .47 |
| AWP-S8-U-PCS | 8 | 5.83 | 4.72 | 1.18 | .20 | .26 | .47 |



- Thread is 1/4 - 20 UNC
- Weld plate is phosphate treated carbon steel. For alternate finishes/materials replace -PCS in the above part numbers with the following codes: -UP unplated carbon steel, -ZN zinc-nickel plated carbon steel, -S4 304 stainless steel, -S6 316 stainless steel. Consult factory for availability.
- Match the group number of your weld plates with your clamp bodies for correct fit.

SINGLE - METRIC

DIMENSIONS IN MM

| PART NO. | GROUP | L1 | L2 | B | S | H | ØD |
|--------------|-------|-----|-----|----|---|-----|----|
| AWP-S1-M-PCS | 1 | 36 | 20 | 30 | 3 | 6.5 | 12 |
| AWP-S2-M-PCS | 2 | 42 | 26 | 30 | 3 | 6.5 | 12 |
| AWP-S3-M-PCS | 3 | 50 | 33 | 30 | 3 | 6.5 | 12 |
| AWP-S4-M-PCS | 4 | 60 | 40 | 30 | 3 | 6.5 | 12 |
| AWP-S5-M-PCS | 5 | 71 | 52 | 30 | 3 | 6.5 | 12 |
| AWP-S6-M-PCS | 6 | 88 | 66 | 30 | 3 | 6.5 | 12 |
| AWP-S7-M-PCS | 7 | 122 | 94 | 30 | 5 | 6.5 | 12 |
| AWP-S8-M-PCS | 8 | 148 | 120 | 30 | 5 | 6.5 | 12 |

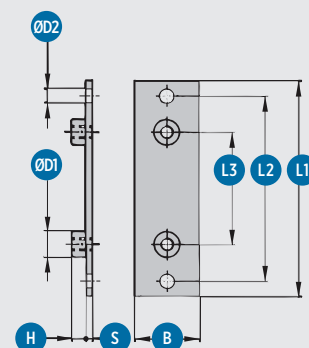
- Thread is 6mm Metric ISO
- Weld plate is phosphate treated carbon steel. For alternate finishes/materials replace -PCS in the above part numbers with the following codes: -UP unplated carbon steel, -ZN zinc-nickel plated carbon steel, -S4 304 stainless steel, -S6 316 stainless steel. Consult factory for availability.
- Match the group number of your weld plates with your clamp bodies for correct fit.

ELONGATED WELD PLATE

ELONGATED

DIMENSIONS IN INCHES

| PART NO. | GROUP | L1 | L2 | L3 | B | S | H | ØD1 | ØD2 |
|---------------|-------|------|------|------|------|-----|-----|-----|-----|
| AWPE-S1-U-PCS | 1 | 2.52 | 0.79 | 1.97 | 1.18 | .12 | .26 | .47 | .26 |
| AWPE-S2-U-PCS | 2 | 2.76 | 1.02 | 2.20 | 1.18 | .12 | .26 | .47 | .26 |
| AWPE-S3-U-PCS | 3 | 3.07 | 1.30 | 2.52 | 1.18 | .12 | .26 | .47 | .26 |
| AWPE-S4-U-PCS | 4 | 3.43 | 1.57 | 2.87 | 1.18 | .12 | .26 | .47 | .26 |
| AWPE-S5-U-PCS | 5 | 3.94 | 2.05 | 3.39 | 1.18 | .12 | .26 | .47 | .26 |
| AWPE-S6-U-PCS | 6 | 4.53 | 2.60 | 3.94 | 1.18 | .12 | .26 | .47 | .26 |
| AWPE-S7-U-PCS | 7 | 5.91 | 3.70 | 5.35 | 1.18 | .20 | .26 | .47 | .26 |
| AWPE-S8-U-PCS | 8 | 7.01 | 4.72 | 6.38 | 1.18 | .20 | .26 | .47 | .26 |



- Thread is 1/4 - 20 UNC
- Weld plate is phosphate treated carbon steel. For alternate finishes/materials replace -PCS in the above part numbers with the following codes: -UP unplated carbon steel, -ZN zinc-nickel plated carbon steel, -S4 304 stainless steel, -S6 316 stainless steel. Consult factory for availability.
- Match the group number of your weld plates with your clamp bodies for correct fit.

ELONGATED - METRIC

DIMENSIONS IN MM

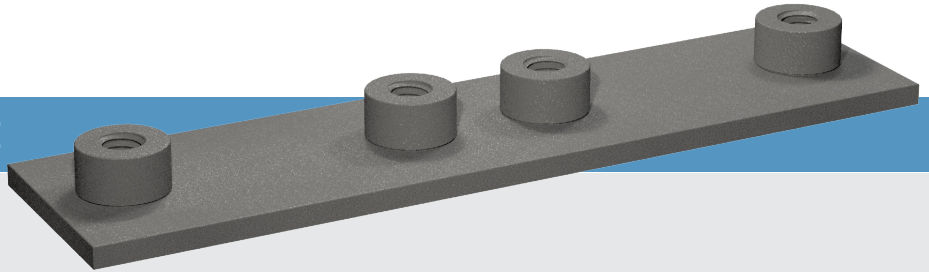
| PART NO. | GROUP | L1 | L2 | L3 | B | S | H | ØD1 | ØD2 |
|---------------|-------|-----|-----|-----|----|---|-----|-----|-----|
| AWPE-S1-M-PCS | 1 | 64 | 20 | 50 | 30 | 3 | 6.5 | 12 | 6.5 |
| AWPE-S2-M-PCS | 2 | 70 | 26 | 56 | 30 | 3 | 6.5 | 12 | 6.5 |
| AWPE-S3-M-PCS | 3 | 78 | 33 | 64 | 30 | 3 | 6.5 | 12 | 6.5 |
| AWPE-S4-M-PCS | 4 | 87 | 40 | 73 | 30 | 3 | 6.5 | 12 | 6.5 |
| AWPE-S5-M-PCS | 5 | 100 | 52 | 86 | 30 | 3 | 6.5 | 12 | 6.5 |
| AWPE-S6-M-PCS | 6 | 115 | 66 | 100 | 30 | 3 | 6.5 | 12 | 6.5 |
| AWPE-S7-M-PCS | 7 | 150 | 94 | 136 | 30 | 5 | 6.5 | 12 | 6.5 |
| AWPE-S8-M-PCS | 8 | 178 | 120 | 162 | 30 | 5 | 6.5 | 12 | 6.5 |

- Thread is 6mm Metric ISO
- Weld plate is phosphate treated carbon steel. For alternate finishes/materials replace -PCS in the above part numbers with the following codes: -UP unplated carbon steel, -ZN zinc-nickel plated carbon steel, -S4 304 stainless steel, -S6 316 stainless steel. Consult factory for availability.
- Match the group number of your weld plates with your clamp bodies for correct fit.

STANDARD WELD PLATES

TWIN AND GROUP

TWIN WELD PLATE

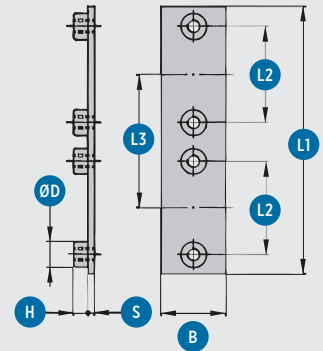


TWIN

DIMENSIONS IN INCHES

| PART NO. | GROUP | L1 | L2 | L3 | B | S | H | ØD |
|---------------|-------|------|------|------|------|-----|-----|-----|
| AWPT-S1-U-PCS | 1 | 3.03 | 0.79 | 1.46 | 1.18 | .12 | .26 | .47 |
| AWPT-S2-U-PCS | 2 | 3.39 | 1.02 | 1.73 | 1.18 | .12 | .26 | .47 |
| AWPT-S3-U-PCS | 3 | 4.02 | 1.30 | 2.05 | 1.18 | .12 | .26 | .47 |
| AWPT-S4-U-PCS | 4 | 4.72 | 1.57 | 2.36 | 1.18 | .12 | .26 | .47 |
| AWPT-S5-U-PCS | 5 | 5.71 | 2.05 | 2.95 | 1.18 | .12 | .26 | .47 |
| AWPT-S6-U-PCS | 6 | 7.01 | 2.60 | 3.54 | 1.18 | .12 | .26 | .47 |

- Thread is 1/4 - 20 UNC
- Weld plate is phosphate treated carbon steel. For alternate finishes/materials replace -PCS in the above part numbers with the following codes: -UP unplated carbon steel, -ZN zinc-nickel plated carbon steel, -S4 304 stainless steel, -S6 316 stainless steel. Consult factory for availability.
- Match the group number of your weld plates with your clamp bodies for correct fit.



TWIN - METRIC

DIMENSIONS IN MM

| PART NO. | GROUP | L1 | L2 | L3 | B | S | H | ØD |
|---------------|-------|-----|----|----|----|---|-----|----|
| AWPT-S1-M-PCS | 1 | 77 | 20 | 37 | 30 | 3 | 6.5 | 12 |
| AWPT-S2-M-PCS | 2 | 86 | 26 | 44 | 30 | 3 | 6.5 | 12 |
| AWPT-S3-M-PCS | 3 | 102 | 33 | 52 | 30 | 3 | 6.5 | 12 |
| AWPT-S4-M-PCS | 4 | 120 | 40 | 60 | 30 | 3 | 6.5 | 12 |
| AWPT-S5-M-PCS | 5 | 145 | 52 | 75 | 30 | 3 | 6.5 | 12 |
| AWPT-S6-M-PCS | 6 | 178 | 66 | 90 | 30 | 3 | 6.5 | 12 |

- Thread is 6mm Metric ISO
- Weld plate is phosphate treated carbon steel. For alternate finishes/materials replace -PCS in the above part numbers with the following codes: -UP unplated carbon steel, -ZN zinc-nickel plated carbon steel, -S4 304 stainless steel, -S6 316 stainless steel. Consult factory for availability.
- Match the group number of your weld plates with your clamp bodies for correct fit.

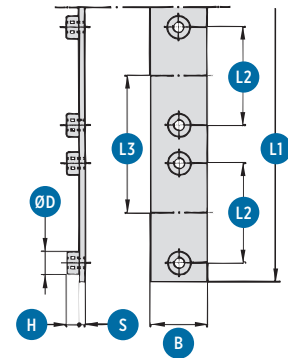
GROUP WELD PLATE

GROUP

DIMENSIONS IN INCHES

| PART NO. | GROUP | L1 | L2 | L3 | B | S | H | ØD |
|----------------------|----------|-------|------|------|------|-----|-----|-----|
| AWPG-S1-U-PCS | 1 | 14.69 | 0.79 | 1.46 | 1.18 | .16 | .26 | .47 |
| AWPG-S2-U-PCS | 2 | 17.40 | 1.02 | 1.73 | 1.18 | .16 | .26 | .47 |
| AWPG-S3-U-PCS | 3 | 20.51 | 1.30 | 2.05 | 1.18 | .16 | .26 | .47 |
| AWPG-S4-U-PCS | 4 | 11.81 | 1.57 | 2.36 | 1.18 | .16 | .26 | .47 |
| AWPG-S5-U-PCS | 5 | 14.88 | 2.05 | 2.95 | 1.18 | .16 | .26 | .47 |
| AWPG-S6-U-PCS | 6 | 17.72 | 2.60 | 3.54 | 1.18 | .16 | .26 | .47 |

- Thread is 1/4 - 20 UNC
- Weld plate is phosphate treated carbon steel. For alternate finishes/materials replace -PCS in the above part numbers with the following codes: -UP unplated carbon steel, -ZN zinc-nickel plated carbon steel, -S4 304 stainless steel, -S6 316 stainless steel. Consult factory for availability.
- Match the group number of your weld plates with your clamp bodies for correct fit.



GROUP - METRIC

DIMENSIONS IN MM

| PART NO. | GROUP | L1 | L2 | L3 | B | S | H | ØD |
|----------------------|----------|-----|----|----|----|---|-----|----|
| AWPG-S1-M-PCS | 1 | 373 | 20 | 37 | 30 | 4 | 6.5 | 12 |
| AWPG-S2-M-PCS | 2 | 442 | 26 | 44 | 30 | 4 | 6.5 | 12 |
| AWPG-S3-M-PCS | 3 | 521 | 33 | 52 | 30 | 4 | 6.5 | 12 |
| AWPG-S4-M-PCS | 4 | 300 | 40 | 60 | 30 | 4 | 6.5 | 12 |
| AWPG-S5-M-PCS | 5 | 378 | 52 | 75 | 30 | 4 | 6.5 | 12 |
| AWPG-S6-M-PCS | 6 | 450 | 66 | 90 | 30 | 4 | 6.5 | 12 |

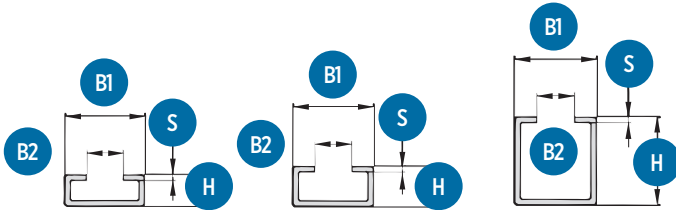
- Thread is 6mm Metric ISO
- Weld plate is phosphate treated carbon steel. For alternate finishes/materials replace -PCS in the above part numbers with the following codes: -UP unplated carbon steel, -ZN zinc-nickel plated carbon steel, -S4 304 stainless steel, -S6 316 stainless steel. Consult factory for availability.
- Match the group number of your weld plates with your clamp bodies for correct fit.

MOUNTING RAIL

DIMENSIONS IN INCHES/MM

| PART NO. | LENGTH | H | B1 | B2 | S |
|---------------|----------|---------|--------|--------|-------|
| AMR-SR1-UP-2M | 2 Meters | .43/11 | 1.1/28 | .43/11 | .08/2 |
| AMR-SR1-UP-1M | 1 Meter | | | | |
| AMR-SR2-UP-2M | 2 Meters | .55/14 | 1.1/28 | .43/11 | .08/2 |
| AMR-SR2-UP-1M | 1 Meter | | | | |
| AMR-SR3-UP-2M | 2 Meters | 1.18/30 | 1.1/28 | .43/11 | .08/2 |
| AMR-SR3-UP-1M | 1 Meter | | | | |

- Mounting rail is unplated carbon steel. For alternate finishes/materials replace -UP in the above part numbers with the following codes: -ZN zinc-nickel plated carbon steel, -S4 304 stainless steel, -S6 316 stainless steel. Consult factory for availability.
- Compatible with all standard and twin clamp components from groups 1-8.



MOUNTING RAIL

HEX RAIL NUT

HEX RAIL NUT

DIMENSIONS IN INCHES

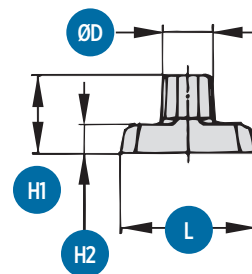
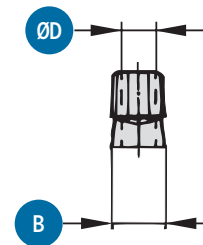
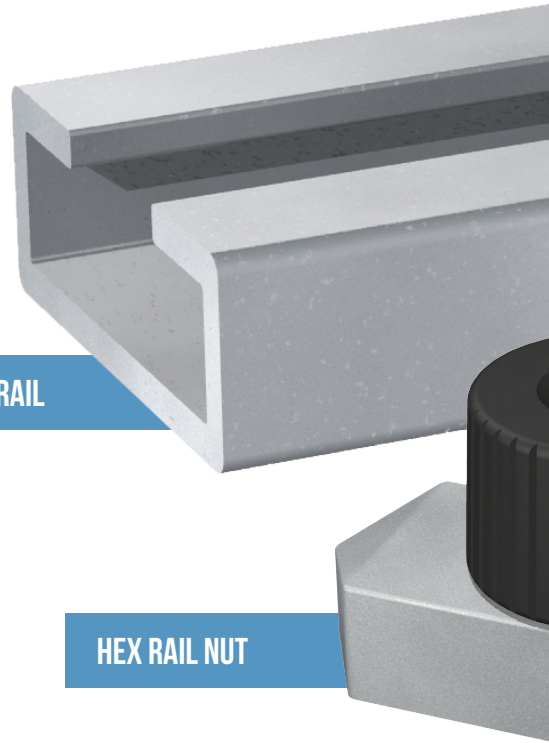
| PART NO. | THREAD | L | B | H1 | H2 | ØD |
|-------------|------------|------|-----|-----|-----|-----|
| AHRN-S-U-ZN | 1/4-20 UNC | 1.00 | .40 | .53 | .22 | .47 |

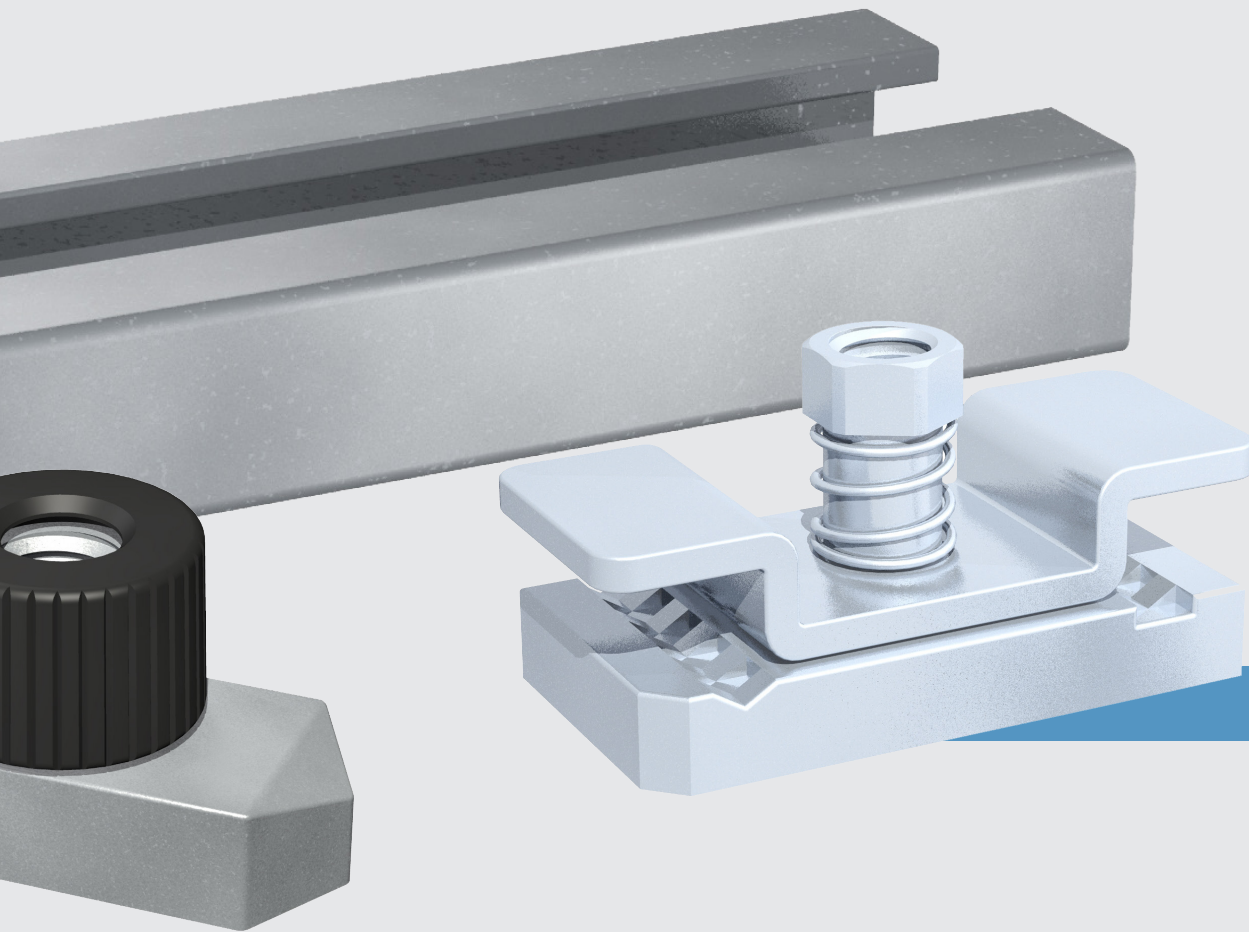
HEX RAIL NUT - METRIC

DIMENSIONS IN MM

| PART NO. | THREAD | L | B | H1 | H2 | ØD |
|-------------|--------|------|------|------|-----|----|
| AHRN-S-M-ZN | M6 | 25.5 | 10.2 | 13.5 | 5.5 | 12 |

- Rail Nut is zinc-nickel plated carbon steel. For alternate finishes/materials replace -ZN in the above part numbers with the following codes: -UP unplated carbon steel, -S4 304 stainless steel, -S6 316 stainless steel. Consult factory for availability.
- Compatible with standard series Group 1 to 8 and Twin series Group 1





CHANNEL ADAPTER

CHANNEL ADAPTER

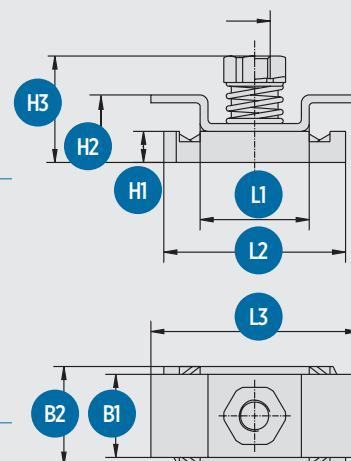
DIMENSIONS IN INCHES

| PART NO. | THREAD | L1 | L2 | L3 | B1 | B2 | H1 | H2 | H3 |
|-------------|------------|-----|------|------|-----|-----|-----|-----|-----|
| ASCA-S-U-ZN | 1/4-20 UNC | .83 | 1.38 | 1.57 | .63 | .75 | .24 | .51 | .81 |

CHANNEL ADAPTER - METRIC

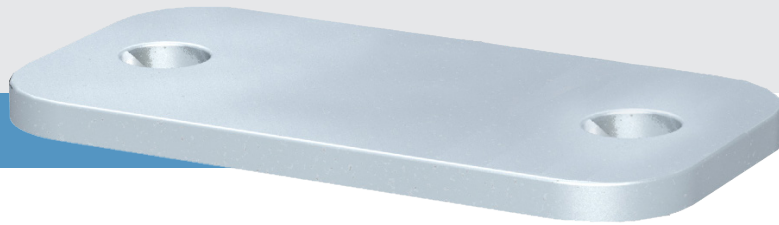
DIMENSIONS IN MM

| PART NO. | THREAD | L1 | L2 | L3 | B1 | B2 | H1 | H2 | H3 |
|-------------|--------|----|----|----|----|----|----|----|------|
| ASCA-S-M-ZN | M6 | 21 | 35 | 40 | 16 | 19 | 6 | 13 | 20.5 |



- Channel adapter is zinc-nickel plated carbon steel.
- For 316 stainless steel replace -ZN with -S6 in above part numbers. (Only available in zinc-nickel and 316ss)
- Compatible with standard series Group 1 to 8 and Twin series Group 1
- Adapter is for use with standard channel rails available elsewhere.

STANDARD COVER PLATE

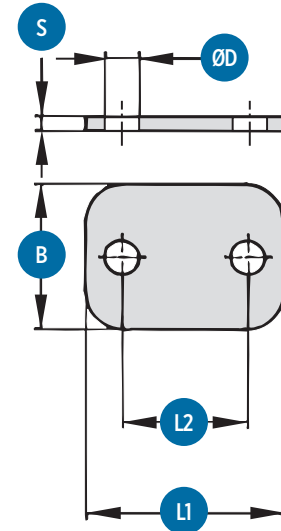


COVER PLATE

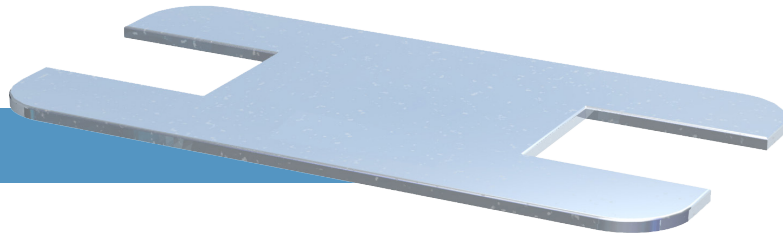
DIMENSIONS IN INCHES

| PART NO. | GROUP | L1 | L2 | B | S | ØD |
|-----------|-------|------|------|------|-----|-----|
| ACP-S1-ZN | 1 | 1.34 | .79 | 1.18 | .12 | .28 |
| ACP-S2-ZN | 2 | 1.59 | 1.02 | 1.18 | .12 | .28 |
| ACP-S3-ZN | 3 | 1.89 | 1.30 | 1.18 | .12 | .28 |
| ACP-S4-ZN | 4 | 2.24 | 1.57 | 1.18 | .12 | .28 |
| ACP-S5-ZN | 5 | 2.76 | 2.05 | 1.18 | .12 | .28 |
| ACP-S6-ZN | 6 | 3.39 | 2.60 | 1.18 | .12 | .28 |
| ACP-S7-ZN | 7 | 4.65 | 3.70 | 1.18 | .20 | .28 |
| ACP-S8-ZN | 8 | 5.67 | 4.72 | 1.18 | .20 | .28 |

- Cover Plate is zinc-nickel plated carbon steel. For alternate finishes/materials replace -ZN in the above part numbers with the following codes: -S4 304 stainless steel, -S6 316 stainless steel. Consult factory for availability.



STANDARD STACKING PLATE

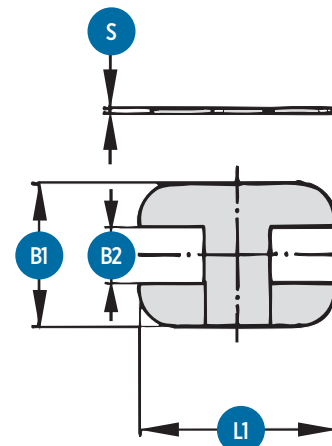


STACKING PLATE

DIMENSIONS IN INCHES

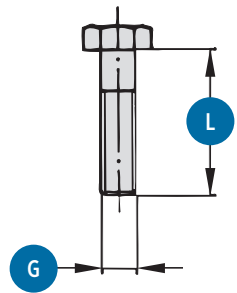
| PART NO. | GROUP | L1 | B1 | B2 | S |
|-----------|-------|------|------|-----|-----|
| ASP-S1-ZN | 1 | 1.30 | 1.10 | .44 | .04 |
| ASP-S2-ZN | 2 | 1.54 | 1.10 | .44 | .04 |
| ASP-S3-ZN | 3 | 1.85 | 1.10 | .44 | .04 |
| ASP-S4-ZN | 4 | 2.20 | 1.10 | .44 | .04 |
| ASP-S5-ZN | 5 | 2.72 | 1.10 | .44 | .04 |
| ASP-S6-ZN | 6 | 3.35 | 1.10 | .44 | .04 |
| ASP-S7-ZN | 7 | 4.61 | 1.10 | .44 | .04 |
| ASP-S8-ZN | 8 | 5.63 | 1.10 | .44 | .04 |

- Stacking Plate is zinc-nickel plated carbon steel. For alternate finishes/materials replace -ZN in the above part numbers with the following codes: -S4 304 stainless steel, -S6 316 stainless steel. Consult factory for availability.

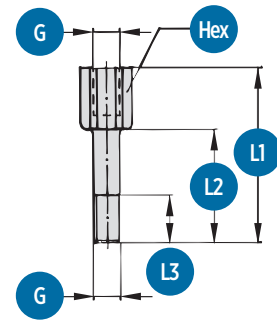




STANDARD HEX HEAD BOLT



STANDARD STACKING BOLT



HEX HEAD BOLT

DIMENSIONS IN INCHES

| PART NO. | GROUP | THREAD G | LENGTH |
|--------------|-------|------------|--------|
| AHHB-S1-U-ZN | 1 | 1/4-20 UNC | 1 1/8 |
| AHHB-S2-U-ZN | 2 | 1/4-20 UNC | 1 3/8 |
| AHHB-S3-U-ZN | 3 | 1/4-20 UNC | 1 3/8 |
| AHHB-S4-U-ZN | 4 | 1/4-20 UNC | 1 5/8 |
| AHHB-S5-U-ZN | 5 | 1/4-20 UNC | 2 3/8 |
| AHHB-S6-U-ZN | 6 | 1/4-20 UNC | 2 3/4 |
| AHHB-S7-U-ZN | 7 | 1/4-20 UNC | 4 |
| AHHB-S8-U-ZN | 8 | 1/4-20 UNC | 4 3/4 |

STACKING BOLT

DIMENSIONS IN INCHES

| PART NO. | GROUP | THREAD G | L1 | L2 | L3 | HEX |
|-------------|-------|------------|------|------|-----|-----|
| ASB-S1-U-ZN | 1 | 1/4-20 UNC | 1.34 | .79 | .47 | .43 |
| ASB-S2-U-ZN | 2 | 1/4-20 UNC | 1.57 | .98 | .47 | .43 |
| ASB-S3-U-ZN | 3 | 1/4-20 UNC | 1.73 | 1.18 | .47 | .43 |
| ASB-S4-U-ZN | 4 | 1/4-20 UNC | 1.93 | 1.38 | .47 | .43 |
| ASB-S5-U-ZN | 5 | 1/4-20 UNC | 2.52 | 1.97 | .47 | .43 |
| ASB-S6-U-ZN | 6 | 1/4-20 UNC | 2.91 | 2.36 | .47 | .43 |
| ASB-S7-U-ZN | 7 | 1/4-20 UNC | 3.90 | 3.35 | .47 | .43 |
| ASB-S8-U-ZN | 8 | 1/4-20 UNC | 4.88 | 4.33 | .47 | .43 |

HEX HEAD BOLT - METRIC

DIMENSIONS IN MM

| PART NO. | GROUP | THREAD G | LENGTH |
|--------------|-------|----------|--------|
| AHHB-S1-M-ZN | 1 | M6 | 27 |
| AHHB-S2-M-ZN | 2 | M6 | 32 |
| AHHB-S3-M-ZN | 3 | M6 | 35 |
| AHHB-S4-M-ZN | 4 | M6 | 42 |
| AHHB-S5-M-ZN | 5 | M6 | 57 |
| AHHB-S6-M-ZN | 6 | M6 | 65 |
| AHHB-S7-M-ZN | 7 | M6 | 95 |
| AHHB-S8-M-ZN | 8 | M6 | 118 |

- Bolt is zinc-nickel plated carbon steel. For alternate finishes/materials replace -ZN in the above part numbers with the following codes: -S4 304 stainless steel, -S6 316 stainless steel. Consult factory for availability.

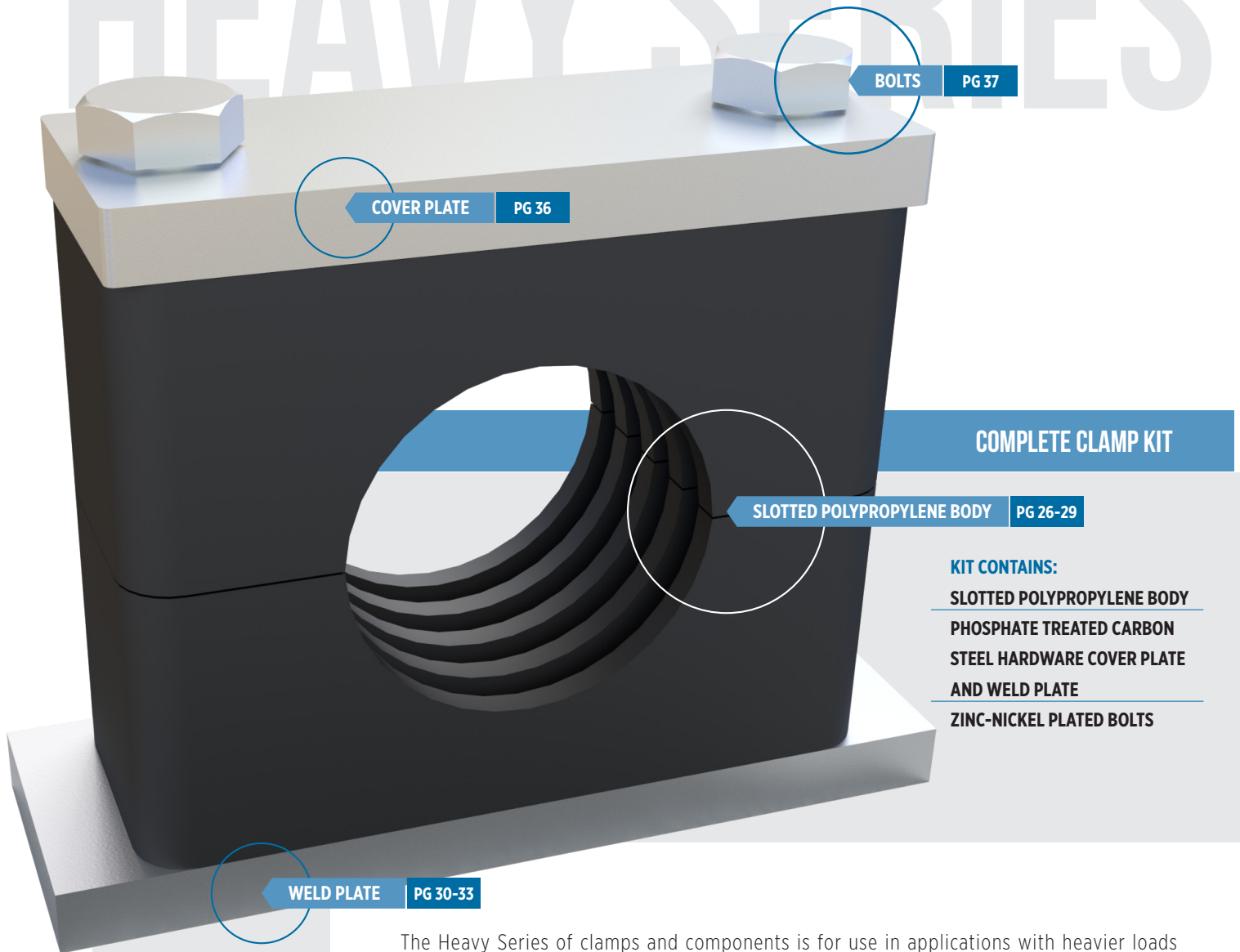
STACKING BOLT - METRIC

DIMENSIONS IN MM

| PART NO. | GROUP | THREAD G | L1 | L2 | L3 | HEX |
|-------------|-------|----------|-----|-----|----|-----|
| ASB-S1-M-ZN | 1 | M6 | 34 | 20 | 12 | 11 |
| ASB-S2-M-ZN | 2 | M6 | 40 | 25 | 12 | 11 |
| ASB-S3-M-ZN | 3 | M6 | 44 | 30 | 12 | 11 |
| ASB-S4-M-ZN | 4 | M6 | 49 | 35 | 12 | 11 |
| ASB-S5-M-ZN | 5 | M6 | 64 | 50 | 12 | 11 |
| ASB-S6-M-ZN | 6 | M6 | 74 | 60 | 12 | 11 |
| ASB-S7-M-ZN | 7 | M6 | 99 | 85 | 12 | 11 |
| ASB-S8-M-ZN | 8 | M6 | 124 | 110 | 12 | 11 |

- Bolt is zinc-nickel plated carbon steel. For alternate finishes/materials replace -ZN in the above part numbers with the following codes: -S4 304 stainless steel, -S6 316 stainless steel. Consult factory for availability.

HEAVY SERIES



The Heavy Series of clamps and components is for use in applications with heavier loads and higher vibrations. Heavy clamps are available with a double weld plate for back-to-back mounting for even greater strength and vibration control.

Brennan's Heavy Series includes complete clamp kits (bodies plus hardware) and a full line of individual components, so you can assemble the configuration that best meets your needs.

Heavy Series clamp bodies are in polypropylene or polyamide and are available with slotted, smooth, or rubber insert profile. Heavy Series hardware includes phosphate treated steel weld plates and cover plates. Zinc-nickel and 304/316 stainless steel is also available. These choices allow you to select a configuration that is perfectly tailored to your application. *

Clamps are available in both imperial and metric sizes, according to groups. Please be sure to choose hardware and bodies from the same group for the best fit.

* Group 8: Finish is unplated steel, not available in zinc-nickel.

HEAVY SERIES: COMPLETE CLAMP KITS

- Everything you need in one package: clamp body, weld plate, cover plate and bolts with only one part number for simplified ordering.
- Stainless kits are also available, see below for ordering instructions.
- Kit bodies are in polypropylene with slotted profile only.

COMPLETE KIT

FOR TUBING APPLICATIONS

| PART NO. | GROUP | OD (in.) |
|---------------|-------|----------|
| CT-H3-04-CS-A | 3 | 1/4 |
| CT-H3-06-CS-A | | 3/8 |
| CT-H3-08-CS-A | | 1/2 |
| CT-H3-10-CS-A | | 5/8 |
| CT-H4-12-CS-A | 4 | 3/4 |
| CT-H4-14-CS-A | | 7/8 |
| CT-H4-16-CS-A | | 1 |
| CT-H5-20-CS-A | 5 | 1 1/4 |
| CT-H5-24-CS-A | | 1 1/2 |
| CT-H6-28-CS-A | 6 | 1 3/4 |
| CT-H6-32-CS-A | | 2 |
| CT-H6-36-CS-A | | 2 1/4 |
| CT-H6-40-CS-A | | 2 1/2 |
| CT-H7-44-CS-A | 7 | 2 3/4 |
| CT-H7-48-CS-A | | 3 |
| CT-H8-56-UN-A | 8 | 3 1/2 |
| CT-H8-64-UN-A | | 4 |

- For alternate finishes/materials replace -CS/UN in the above part numbers with the following codes: -S4 304 stainless steel, -S6 316 stainless steel. Consult factory for availability.

COMPLETE KIT

FOR PIPE APPLICATIONS

| PART NO. | GROUP | NB* (in.) |
|---------------|-------|-----------|
| CP-H3-04-CS-A | 3 | 1/4 |
| CP-H3-06-CS-A | | 3/8 |
| CP-H4-08-CS-A | 4 | 1/2 |
| CP-H4-12-CS-A | | 3/4 |
| CP-H5-16-CS-A | 5 | 1 |
| CP-H5-20-CS-A | | 1 1/4 |
| CP-H6-24-CS-A | 6 | 1 1/2 |
| CP-H6-32-CS-A | | 2 |
| CP-H7-40-CS-A | 7 | 2 1/2 |
| CP-H8-48-UN-A | 8 | 3 |

- For alternate finishes/materials replace -CS/UN in the above part numbers with the following codes: -S4 304 stainless steel, -S6 316 stainless steel. Consult factory for availability.
- Nominal bore*

HEAVY CLAMP BODIES

- The Heavy Series is available with slotted, smooth or rubber insert profiles in sizes for tube, pipe and hose.
- Brennan slotted profile clamp bodies are a proven product for safe installation of rigid pipes and tubes. Available in common sizes, they have excellent vibration and noise reduction as well as weather resistance.



SLOTTED PROFILE

PIPE

DIMENSIONS IN INCHES

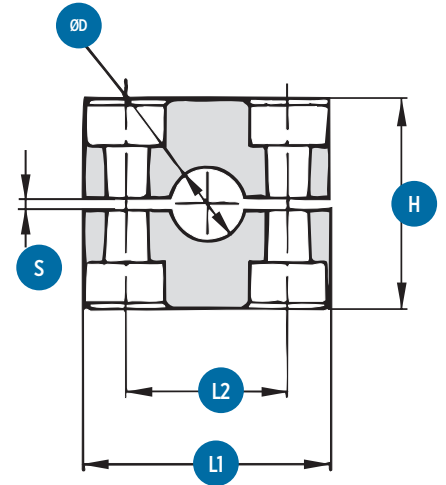
| PART NO. | NB | GROUP | L1 | L2 | H | S _{min} | W |
|----------------|-------|-------|------|------|------|------------------|------|
| ACB-HP3-P04-PP | 1/4 | 3 | 2.16 | 1.3 | 1.26 | 0.02 | 1.2 |
| ACB-HP3-P06-PP | 3/8 | | | | | | |
| ACB-HP4-P08-PP | 1/2 | 4 | 2.76 | 1.77 | 1.89 | 0.02 | 1.2 |
| ACB-HP4-P12-PP | 3/4 | | | | | | |
| ACB-HP5-P16-PP | 1 | 5 | 3.35 | 2.36 | 2.36 | 0.02 | 1.2 |
| ACB-HP5-P20-PP | 1 1/4 | | | | | | |
| ACB-HP6-P24-PP | 1 1/2 | 6 | 4.53 | 3.54 | 3.5 | 0.08 | 1.77 |
| ACB-HP6-P32-PP | 2 | | | | | | |
| ACB-HP6-P40-PP | 2 1/2 | | | | | | |
| ACB-HP7-P48-PP | 3 | 7 | 6.06 | 4.8 | 4.72 | 0.08 | 2.36 |

- Standard clamp bodies are black polypropylene with slotted inside surface profile.
- For polyamide clamp bodies substitute -PA for -PP above (ACB-HP3-P04-PP becomes ACB-HP3-P04-PA)
- Nominal bore*

TUBE

DIMENSIONS IN INCHES

| PART NO. | ØD | GROUP | L1 | L2 | H | S min | W |
|----------------|-------|-------|------|------|------|-------|------|
| ACB-HP3-T04-PP | 1/4 | 3 | 2.16 | 1.3 | 1.26 | 0.02 | 1.2 |
| ACB-HP3-T06-PP | 3/8 | | | | | | |
| ACB-HP3-T08-PP | 1/2 | | | | | | |
| ACB-HP3-T10-PP | 5/8 | | | | | | |
| ACB-HP4-T12-PP | 3/4 | 4 | 2.76 | 1.77 | 1.89 | 0.02 | 1.2 |
| ACB-HP4-T14-PP | 7/8 | | | | | | |
| ACB-HP4-T16-PP | 1 | | | | | | |
| ACB-HP5-T20-PP | 1 1/4 | 5 | 3.35 | 2.36 | 2.36 | 0.02 | 1.2 |
| ACB-HP5-T24-PP | 1 1/2 | | | | | | |
| ACB-HP6-T28-PP | 1 3/4 | 6 | 4.53 | 3.54 | 3.5 | 0.08 | 1.77 |
| ACB-HP6-T32-PP | 2 | | | | | | |
| ACB-HP6-T36-PP | 2 1/4 | | | | | | |
| ACB-HP6-T40-PP | 2 1/2 | | | | | | |
| ACB-HP7-T44-PP | 2 3/4 | 7 | 6.06 | 4.8 | 4.72 | 0.08 | 2.36 |
| ACB-HP7-T48-PP | 3 | | | | | | |
| ACB-HP8-T64-PP | 4 | 8 | 8.11 | 6.61 | 6.61 | 0.08 | 3.15 |



TUBE - METRIC

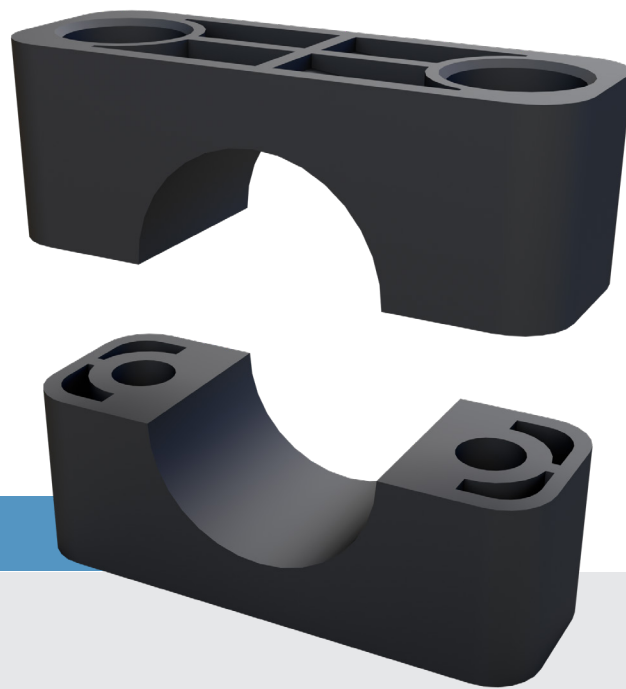
DIMENSIONS IN MM

| PART NO. | ØD | GROUP | L1 | L2 | H | S min | W |
|-----------------|----|-------|-----|----|----|-------|------|
| ACB-HP3-TM06-PP | 6 | 3 | 55 | 33 | 32 | 0.6 | 30.5 |
| ACB-HP3-TM08-PP | 8 | | | | | | |
| ACB-HP3-TM10-PP | 10 | | | | | | |
| ACB-HP3-TM12-PP | 12 | | | | | | |
| ACB-HP3-TM14-PP | 14 | | | | | | |
| ACB-HP3-TM15-PP | 15 | | | | | | |
| ACB-HP3-TM16-PP | 16 | | | | | | |
| ACB-HP3-TM18-PP | 18 | | | | | | |
| ACB-HP4-TM19-PP | 19 | 4 | 70 | 45 | 48 | 0.6 | 30.5 |
| ACB-HP4-TM20-PP | 20 | | | | | | |
| ACB-HP4-TM22-PP | 22 | | | | | | |
| ACB-HP4-TM25-PP | 25 | | | | | | |
| ACB-HP4-TM28-PP | 28 | | | | | | |
| ACB-HP5-TM30-PP | 30 | 5 | 85 | 60 | 60 | 0.6 | 30.5 |
| ACB-HP5-TM32-PP | 32 | | | | | | |
| ACB-HP5-TM35-PP | 35 | | | | | | |
| ACB-HP5-TM38-PP | 38 | | | | | | |
| ACB-HP5-TM40-PP | 40 | | | | | | |
| ACB-HP6-TM42-PP | 42 | 6 | 115 | 90 | 89 | 2 | 45 |

- Standard clamp bodies are black polypropylene with slotted inside surface profile.
- For polyamide clamp bodies substitute -PA for -PP above (ACB-HP3-TM06-PP becomes ACB-HP3-TM06-PA)

HEAVY CLAMP BODIES

- Smooth profile clamp bodies are perfect for use with hoses and cables. They have chamfered edges to reduce wear and damage.

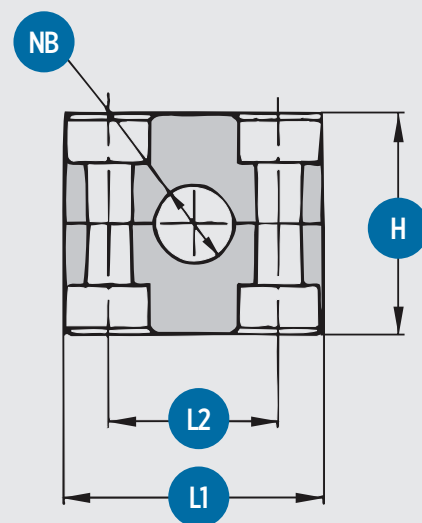


SMOOTH PROFILE

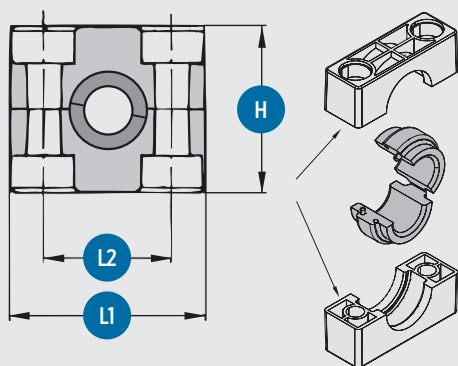
HOSE

DIMENSIONS IN INCHES

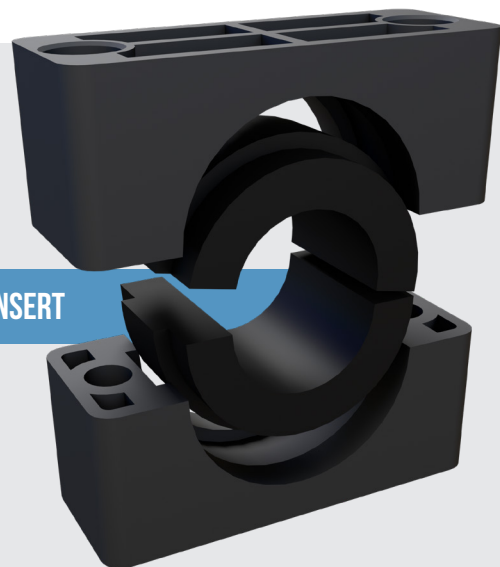
| PART NO. | NB* | GROUP | L1 | L2 | H | W | ØD |
|----------------|-------|-------|------|------|------|------|------|
| ACB-HS4-H04-PP | 1/4 | 4 | 2.76 | 1.77 | 1.83 | 1.20 | .59 |
| ACB-HS4-H06-PP | 3/8 | | | | | | |
| ACB-HS4-H08-PP | 1/2 | | | | | | |
| ACB-HS4-H10-PP | 5/8 | | | | | | |
| ACB-HS4-H12-PP | 3/4 | | | | | | |
| ACB-HS6-H16-PP | 1 | 6 | 4.53 | 3.54 | 3.43 | 1.77 | 1.49 |
| ACB-HS6-H20-PP | 1 1/4 | | | | | | 1.91 |
| ACB-HS6-H24-PP | 1 1/2 | | | | | | 2.14 |



- Standard clamp bodies are black polypropylene with smooth inside surface profile.
- For polyamide clamp bodies substitute -PA for -PP above (ACB-HS3-H04-PP becomes ACB-HS3-H04-PA)
- **Nominal Bore, Hydraulic hose SAE 100 R2 AT ***



BODY WITH RUBBER INSERT



BODIES FOR INSERTS

DIMENSIONS IN INCHES/MM

| PART NO. | GROUP | ØD | L1 | L2 | H | W |
|-------------|-------|----------|----------|----------|-----------|-----------|
| ACB-HRI4-PP | 4 | .98/25 | 2.76/70 | 1.77/45 | 4.83/46.5 | 1.20/30.5 |
| ACB-HRI5-PP | 5 | 1.50/38 | 3.35/85 | 2.36/60 | 2.28/58 | 1.20/30.5 |
| ACB-HRI6-PP | 6 | 2.52/64 | 4.53/115 | 3.54/90 | 3.43/87 | 1.77/45 |
| ACB-HRI7-PP | 7 | 3.56/88 | 6.06/154 | 4.80/122 | 4.72/120 | 2.36/60 |
| ACB-HRI8-PP | 8 | 4.49/114 | 8.11/208 | 6.61/168 | 6.61/168 | 3.15/80 |

- Clamp bodies are black polypropylene profiled for use with rubber inserts.
- Match the group number of your clamp bodies with your rubber inserts for correct fit.

- For the ultimate in noise isolation or for the most protective installation of delicate hoses or cables use Brennan clamp bodies with soft rubber inserts.

RUBBER INSERTS

DIMENSIONS IN INCHES/MM

| PART NO. | ØD IN | ØD MM | GROUP |
|--------------|-------|-------|-------|
| ARI-H4-M06 | | 6 | 4 |
| ARI-H4-M08 | 5/16 | 8 | |
| ARI-H4-M10 | | 10 | |
| ARI-H4-M12 | | 12 | |
| ARI-H4-M12.7 | 1/2 | 12.7 | |
| ARI-H4-M14 | | 14 | |
| ARI-H4-M15 | | 15 | |
| ARI-H4-M16 | 5/8 | 16 | |
| ARI-H4-M17.2 | | 17.2 | |
| ARI-H4-M18 | | 18 | |
| ARI-H4-M19 | 3/4 | 19 | 5 |
| ARI-H5-M20 | | 20 | |
| ARI-H5-M21.3 | | 21.3 | |
| ARI-H5-M22 | 7/8 | 22 | |
| ARI-H5-M25 | | 25 | |
| ARI-H5-M26.9 | | 26.9 | |
| ARI-H5-M28 | | 28 | |
| ARI-H5-M30 | | 30 | |

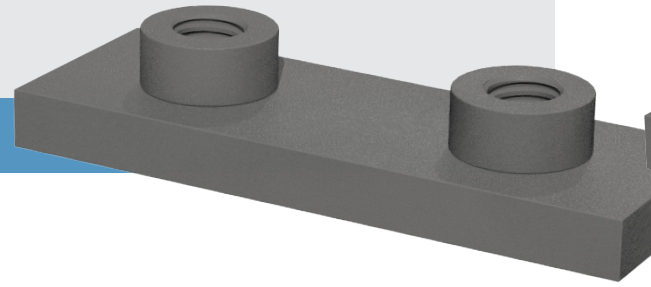
| PART NO. | ØD IN | ØD MM | GROUP |
|--------------|-------|-------|-------|
| ARI-H6-M32 | 1-1/4 | 32 | 6 |
| ARI-H6-M33.7 | | 33.7 | |
| ARI-H6-M35 | | 35 | |
| ARI-H6-M38.7 | | 38.7 | |
| ARI-H6-M40 | | 40 | |
| ARI-H6-M42 | | 42 | |
| ARI-H6-M45.5 | | 45.5 | |
| ARI-H6-M48 | | 48 | |
| ARI-H6-M51 | 2 | 51 | |
| ARI-H7-M55 | | 55 | 7 |
| ARI-H7-M57 | 2-1/4 | 57 | |
| ARI-H7-M60 | | 60 | |
| ARI-H7-M63.5 | 2-1/2 | 63.5 | |
| ARI-H7-M65 | | 65 | |
| ARI-H7-M70 | 2-3/4 | 70 | |
| ARI-H7-M72 | | 72 | |
| ARI-H7-M76 | 3 | 76 | |
| ARI-H8-M80 | | 80 | 8 |
| ARI-H8-M88.9 | 3-1/2 | 88.9 | |
| ARI-H8-M102 | | 102 | |

- Inserts are black thermoplastic elastomer.
- Match the group number of your clamp bodies with your inserts for correct fit.

HEAVY WELD PLATES

SINGLE AND DOUBLE

SINGLE HEAVY WELD PLATE



SINGLE

DIMENSIONS IN INCHES

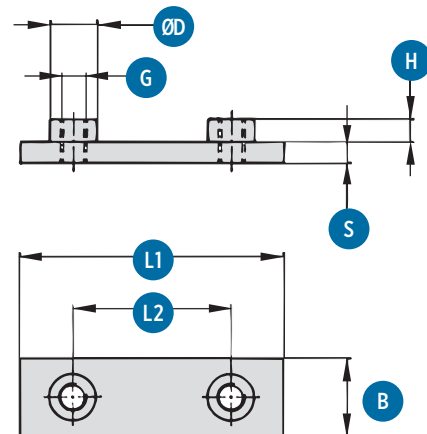
| PART NO. | GROUP | L1 | L2 | B | S | H | THREAD G | ØD |
|--------------|-------|------|------|------|-----|-----|-------------|------|
| AWP-H3-U-PCS | 3 | 2.91 | 1.30 | 1.18 | .31 | .31 | 3/8-16 UNC | .71 |
| AWP-H4-U-PCS | 4 | 3.39 | 1.77 | 1.18 | .31 | .31 | 3/8-16 UNC | .71 |
| AWP-H5-U-PCS | 5 | 3.94 | 2.36 | 1.18 | .31 | .31 | 3/8-16 UNC | .71 |
| AWP-H6-U-PCS | 6 | 5.51 | 3.54 | 1.77 | .39 | .31 | 7/16-14 UNC | .78 |
| AWP-H7-U-PCS | 7 | 7.09 | 4.80 | 2.36 | .39 | .47 | 5/8-11 UNC | .94 |
| AWP-H8-U-UP | 8 | 8.90 | 6.61 | 3.15 | .59 | .71 | 3/4-10 UNC | 1.18 |

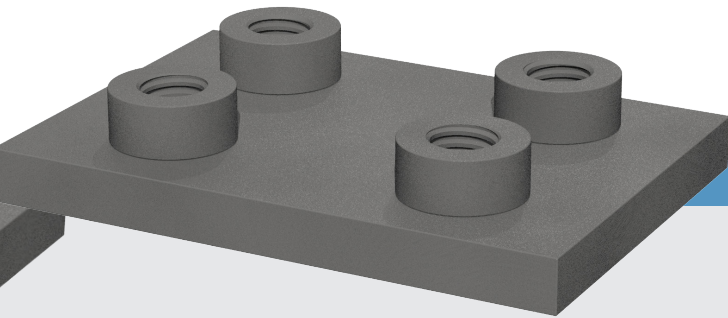
SINGLE - METRIC

DIMENSIONS IN MM

| PART NO. | GROUP | L1 | L2 | B | S | H | THREAD G | ØD |
|--------------|-------|-----|-----|----|----|----|----------|----|
| AWP-H3-M-PCS | 3 | 74 | 33 | 30 | 8 | 8 | M10 | 18 |
| AWP-H4-M-PCS | 4 | 86 | 45 | 30 | 8 | 8 | M10 | 18 |
| AWP-H5-M-PCS | 5 | 100 | 60 | 30 | 8 | 8 | M10 | 18 |
| AWP-H6-M-PCS | 6 | 140 | 90 | 45 | 10 | 8 | M12 | 20 |
| AWP-H7-M-PCS | 7 | 180 | 122 | 60 | 10 | 12 | M16 | 24 |
| AWP-H8-M-UP | 8 | 226 | 168 | 80 | 15 | 18 | M20 | 30 |

- Weld plate is phosphate treated carbon steel (Group 8 = unplated). For alternate finishes/materials replace -PCS/UP in the above part numbers with the following codes: -ZN zinc-nickel (not available for group 8), -S4 304 stainless steel, -S6 316 stainless steel. Consult factory for availability.
- Match the group number of your weld plates with your clamp bodies for correct fit.





DOUBLE HEAVY WELD PLATE

DOUBLE

DIMENSIONS IN INCHES

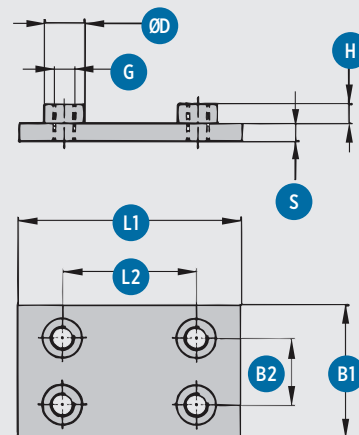
| PART NO. | GROUP | L1 | L2 | B1 | B2 | S | H | THREAD G | ØD |
|----------------------|----------|------|------|------|------|-----|-----|-------------|------|
| AWPD-H3-U-PCS | 3 | 2.91 | 1.30 | 2.36 | 1.20 | .31 | .31 | 3/8-16 UNC | .71 |
| AWPD-H4-U-PCS | 4 | 3.39 | 1.77 | 2.36 | 1.20 | .31 | .31 | 3/8-16 UNC | .71 |
| AWPD-H5-U-PCS | 5 | 3.94 | 2.36 | 2.36 | 1.20 | .31 | .31 | 3/8-16 UNC | .71 |
| AWPD-H6-U-PCS | 6 | 5.51 | 3.54 | 3.54 | 1.81 | .39 | .31 | 7/16-14 UNC | .78 |
| AWPD-H7-U-PCS | 7 | 7.09 | 4.80 | 4.72 | 2.40 | .39 | .47 | 5/8-11 UNC | .94 |
| AWPD-H8-U-UP | 8 | 8.90 | 6.61 | 6.61 | 3.19 | .59 | .71 | 3/4-10 UNC | 1.18 |

DOUBLE - METRIC

DIMENSIONS IN MM

| PART NO. | GROUP | L1 | L2 | B1 | B2 | S | H | THREAD G | ØD |
|----------------------|----------|-----|-----|-----|------|----|----|----------|----|
| AWPD-H3-M-PCS | 3 | 74 | 33 | 60 | 30.5 | 8 | 8 | M10 | 18 |
| AWPD-H4-M-PCS | 4 | 86 | 45 | 60 | 30.5 | 8 | 8 | M10 | 18 |
| AWPD-H5-M-PCS | 5 | 100 | 60 | 60 | 30.5 | 8 | 8 | M10 | 18 |
| AWPD-H6-M-PCS | 6 | 140 | 90 | 90 | 46 | 10 | 8 | M12 | 20 |
| AWPD-H7-M-PCS | 7 | 180 | 122 | 120 | 61 | 10 | 12 | M16 | 24 |
| AWPD-H8-M-UP | 8 | 226 | 168 | 160 | 81 | 15 | 18 | M20 | 30 |

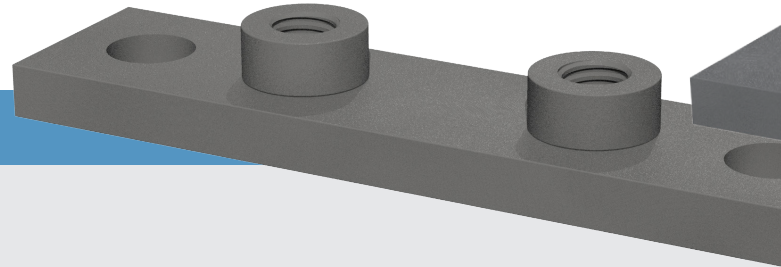
- Weld plate is phosphate treated carbon steel (Group 8 = unplated). For alternate finishes/materials replace -PCS/UP in the above part numbers with the following codes: -ZN zinc-nickel (not available for group 8), -S4 304 stainless steel, -S6 316 stainless steel. Consult factory for availability.
- Match the group number of your weld plates with your clamp bodies for correct fit.



HEAVY WELD PLATES

ELONGATED AND ELONGATED DOUBLE

ELONGATED HEAVY WELD PLATE



ELONGATED

DIMENSIONS IN INCHES

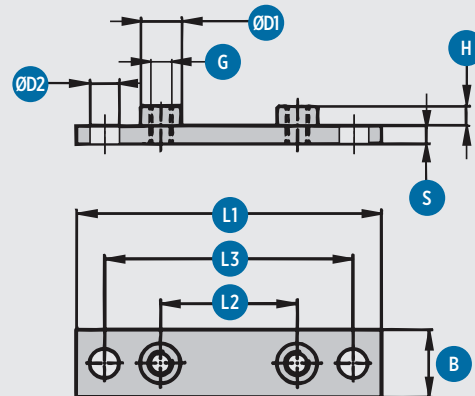
| PART NO. | GROUP | L1 | L2 | L3 | B | S | H | THREAD G | ØD1 | ØD2 |
|---------------|-------|-------|------|-------|------|-----|-----|-------------|------|------|
| AWPE-H3-U-PCS | 3 | 4.45 | 1.30 | 3.35 | 1.18 | .31 | .31 | 3/8-16 UNC | .71 | .51 |
| AWPE-H4-U-PCS | 4 | 4.92 | 1.77 | 3.82 | 1.18 | .31 | .31 | 3/8-16 UNC | .71 | .51 |
| AWPE-H5-U-PCS | 5 | 5.51 | 2.36 | 4.41 | 1.18 | .31 | .31 | 3/8-16 UNC | .71 | .51 |
| AWPE-H6-U-PCS | 6 | 7.36 | 3.54 | 6.10 | 1.77 | .39 | .31 | 7/16-14 UNC | .78 | .62 |
| AWPE-H7-U-PCS | 7 | 9.37 | 4.80 | 7.80 | 2.36 | .39 | .47 | 5/8-11 UNC | .94 | .83 |
| AWPE-H8-U-UP | 8 | 12.17 | 6.61 | 10.20 | 3.15 | .59 | .71 | 3/4-10 UNC | 1.18 | 1.02 |

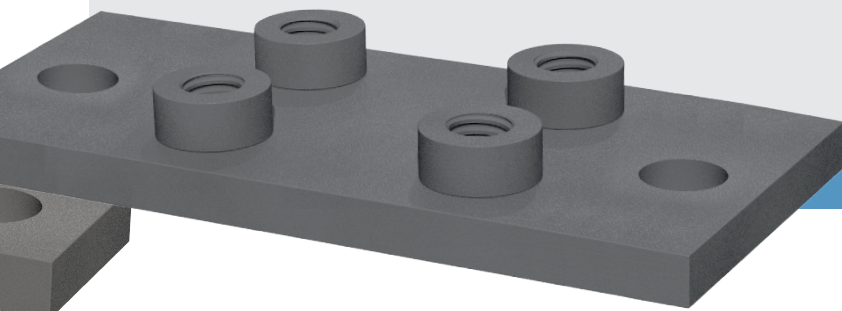
ELONGATED - METRIC

DIMENSIONS IN MM

| PART NO. | GROUP | L1 | L2 | L3 | B | S | H | THREAD G | ØD1 | ØD2 |
|---------------|-------|-----|-----|-----|----|----|----|----------|-----|-----|
| AWPE-H3-M-PCS | 3 | 113 | 33 | 85 | 30 | 8 | 8 | M10 | 18 | 13 |
| AWPE-H4-M-PCS | 4 | 125 | 45 | 97 | 30 | 8 | 8 | M10 | 18 | 13 |
| AWPE-H5-M-PCS | 5 | 140 | 60 | 112 | 30 | 8 | 8 | M10 | 18 | 13 |
| AWPE-H6-M-PCS | 6 | 187 | 90 | 155 | 45 | 10 | 8 | M12 | 20 | 16 |
| AWPE-H7-M-PCS | 7 | 238 | 122 | 198 | 60 | 10 | 12 | M16 | 24 | 21 |
| AWPE-H8-M-UP | 8 | 309 | 168 | 259 | 80 | 15 | 18 | M20 | 30 | 26 |

- Weld plate is phosphate treated carbon steel (Group 8 = unplated). For alternate finishes/materials replace -PCS/UP in the above part numbers with the following codes: -ZN zinc-nickel (not available for group 8), -S4 304 stainless steel, -S6 316 stainless steel. Consult factory for availability.
- Match the group number of your weld plates with your clamp bodies for correct fit.





ELONGATED DOUBLE HEAVY WELD PLATE

ELONGATED DOUBLE

DIMENSIONS IN INCHES

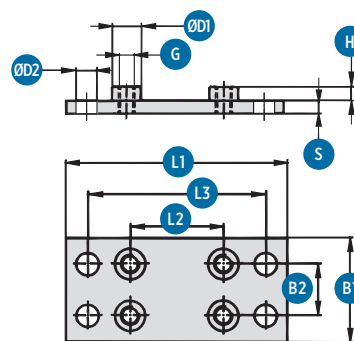
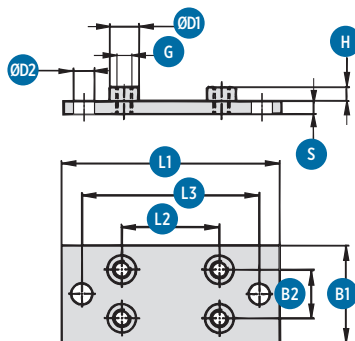
| PART NO. | GROUP | L1 | L2 | L3 | B1 | B2 | S | H | THREAD G | ØD1 | ØD2 |
|-----------------------|----------|-------|------|-------|------|------|-----|-----|-------------|------|------|
| AWPDE-H3-U-PCS | 3 | 4.45 | 1.30 | 3.35 | 2.36 | 1.20 | .31 | .31 | 3/8-16 UNC | .71 | .51 |
| AWPDE-H4-U-PCS | 4 | 4.92 | 1.77 | 3.82 | 2.36 | 1.20 | .31 | .31 | 3/8-16 UNC | .71 | .51 |
| AWPDE-H5-U-PCS | 5 | 5.51 | 2.36 | 4.41 | 2.36 | 1.20 | .31 | .31 | 3/8-16 UNC | .71 | .51 |
| AWPDE-H6-U-PCS | 6 | 7.36 | 3.54 | 6.10 | 3.54 | 1.81 | .39 | .31 | 7/16-14 UNC | .78 | .62 |
| AWPDE-H7-U-PCS | 7 | 9.37 | 4.80 | 7.80 | 4.72 | 2.40 | .39 | .47 | 5/8-11 UNC | .94 | .83 |
| AWPDE-H8-U-UP | 8 | 12.17 | 6.61 | 10.20 | 6.61 | 3.19 | .59 | .71 | 3/4-10 UNC | 1.18 | 1.02 |

ELONGATED DOUBLE - METRIC

DIMENSIONS IN MM

| PART NO. | GROUP | L1 | L2 | L3 | B1 | B2 | S | H | THREAD G | ØD1 | ØD2 |
|-----------------------|----------|-----|-----|-----|-----|------|----|----|----------|-----|-----|
| AWPDE-H3-M-PCS | 3 | 113 | 33 | 85 | 60 | 30,5 | 8 | 8 | M10 | 18 | 13 |
| AWPDE-H4-M-PCS | 4 | 125 | 45 | 97 | 60 | 30,5 | 8 | 8 | M10 | 18 | 13 |
| AWPDE-H5-M-PCS | 5 | 140 | 60 | 112 | 60 | 30,5 | 8 | 8 | M10 | 18 | 13 |
| AWPDE-H6-M-PCS | 6 | 187 | 90 | 155 | 90 | 46 | 10 | 8 | M12 | 20 | 16 |
| AWPDE-H7-M-PCS | 7 | 238 | 122 | 198 | 120 | 61 | 10 | 12 | M16 | 24 | 21 |
| AWPDE-H8-M-UP | 8 | 309 | 168 | 259 | 160 | 81 | 15 | 18 | M20 | 30 | 26 |

- Weld plate is phosphate treated carbon steel (Group 8 = unplated). For alternate finishes/materials replace -PCS/UP in the above part numbers with the following codes: -ZN zinc-nickel (not available for group 8), -S4 304 stainless steel, -S6 316 stainless steel. Consult factory for availability.
- Match the group number of your weld plates with your clamp bodies for correct fit.



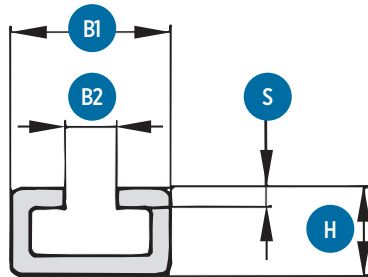
MOUNTING RAIL

DIMENSIONS IN INCHES/MM

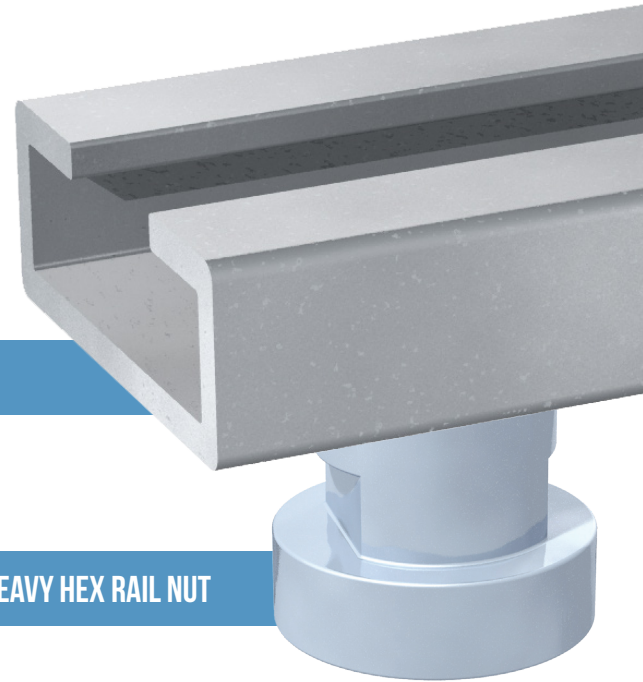
| PARTNUMBER | LENGTH | B1 | B2 | H | S |
|----------------------|----------|---------|--------|--------|-------|
| AMR-HR1-UP-2M | 2 Meters | 1.57/40 | .39/13 | .86/22 | .19/5 |
| AMR-HR1-UP-1M | 1 Meter | 1.57/40 | .39/13 | .86/22 | .19/5 |

- Mounting Rail is unplated carbon steel. For alternate finishes/materials replace -UP in the above part numbers with the following codes: -ZN zinc-nickel plated carbon steel, -S6 316 stainless steel. Consult factory for availability.

HEAVY MOUNTING RAIL



HEAVY HEX RAIL NUT



RAIL NUT

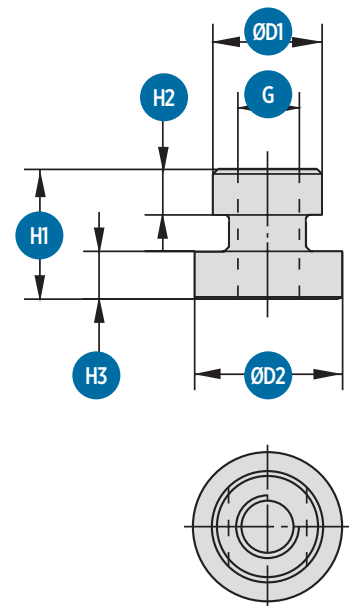
DIMENSIONS IN INCHES

| PART NO. | GROUP | THREAD | ØD1 | ØD2 | H1 | H2 | H3 |
|-----------------------|-------|-------------|-----|-----|-----|-----|-----|
| AHRN-H345-U-ZN | 3,4,5 | 3/8-16 UNC | .70 | .94 | .83 | .30 | .29 |
| AHRN-H6-U-ZN | 6 | 7/16-14 UNC | .78 | .94 | .91 | .35 | .32 |

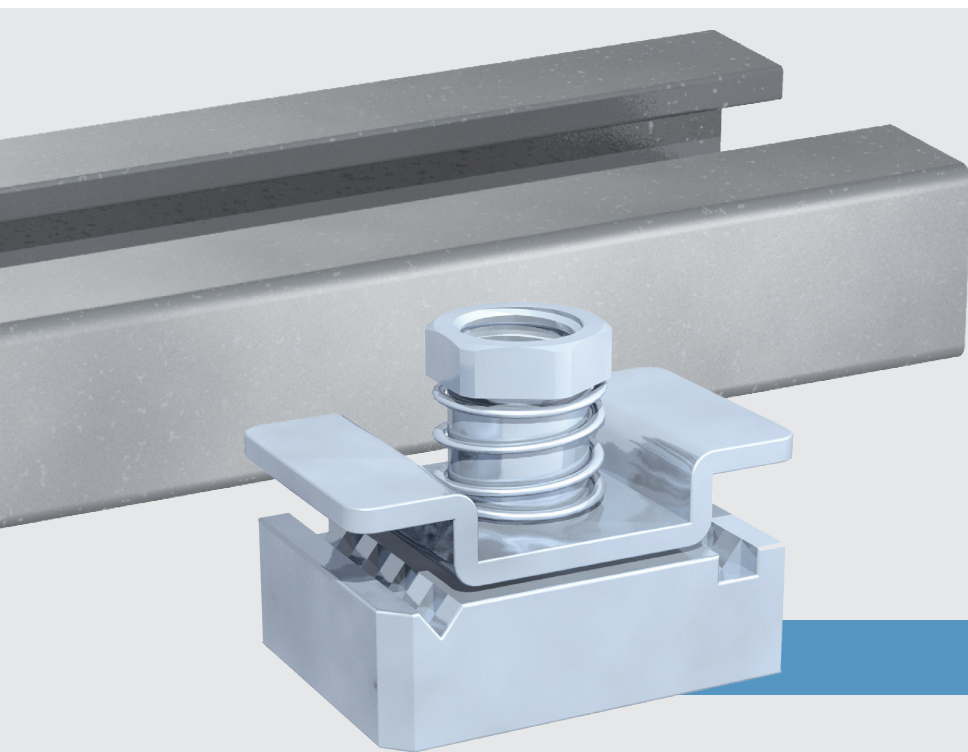
RAIL NUT - METRIC

DIMENSIONS IN MM

| PART NO. | GROUP | THREAD | ØD1 | ØD2 | H1 | H2 | H3 |
|-----------------------|-------|--------|------|-----|----|-----|-----|
| AHRN-H345-M-ZN | 3,4,5 | M10 | 17.8 | 24 | 21 | 7.6 | 7.4 |
| AHRN-H6-M-ZN | 6 | M12 | 19.8 | 24 | 23 | 8.8 | 8.2 |



- Rail Nut is zinc-nickel plated carbon steel. For alternate finishes/materials replace -ZN in the above part numbers with the following codes: -S4 304 stainless steel, -S6 316 stainless steel. Consult factory for availability.

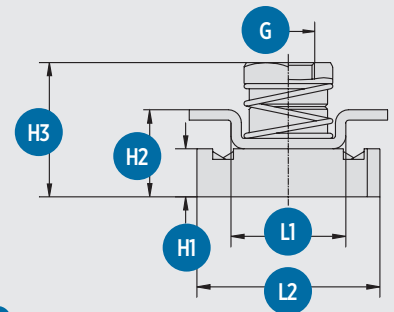


CHANNEL ADAPTER

CHANNEL ADAPTER

DIMENSIONS IN INCHES

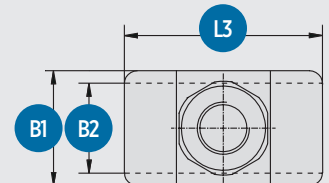
| PART NO. | GROUP | THREAD | L1 | L2 | L3 | B1 | B2 | H1 | H2 | H3 |
|----------------|-------|-------------|-----|------|------|-----|-----|-----|-----|------|
| ASCA-H345-U-ZN | 3,4,5 | 3/8-16 UNC | .87 | 1.38 | 1.50 | .87 | .81 | .36 | .66 | 1.08 |
| ASCA-H6-U-ZN | 6 | 7/16-14 UNC | .85 | 1.38 | 1.77 | .98 | .75 | .36 | .60 | 1.08 |



CHANNEL ADAPTER - METRIC

DIMENSIONS IN MM

| PART NO. | GROUP | THREAD | L1 | L2 | L3 | B1 | B2 | H1 | H2 | H3 |
|----------------|-------|--------|------|----|----|----|------|-----|------|------|
| ASCA-H345-M-ZN | 3,4,5 | M10 | 22 | 35 | 38 | 22 | 20.5 | 9.2 | 16.7 | 27.5 |
| ASCA-H6-M-ZN | 6 | M12 | 21.5 | 35 | 45 | 25 | 19 | 9.2 | 16.7 | 27.5 |



• Channel Adapter is zinc-nickel plated carbon steel. For alternate finishes/materials replace -ZN in the above part numbers with the following codes: -S6 316 stainless steel. Consult factory for availability.

• Adapter is for use with standard channel rails available elsewhere.

COVER PLATE

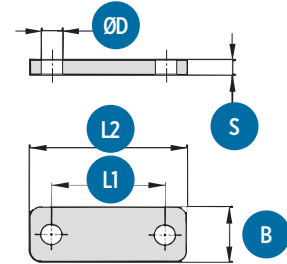
DIMENSIONS IN INCHES

| PART NO. | GROUP | L1 | L2 | B | S | ØD |
|------------|-------|------|------|------|-----|-----|
| ACP-H3-PCS | 3 | 2.16 | 1.30 | 1.18 | .31 | .43 |
| ACP-H4-PCS | 4 | 2.76 | 1.77 | 1.18 | .31 | .43 |
| ACP-H5-PCS | 5 | 3.35 | 2.36 | 1.18 | .31 | .43 |
| ACP-H6-PCS | 6 | 4.53 | 3.54 | 1.77 | .39 | .55 |
| ACP-H7-PCS | 7 | 5.98 | 4.80 | 2.36 | .39 | .75 |
| ACP-H8-UP | 8 | 8.11 | 6.61 | 3.15 | .59 | .87 |

- Cover Plate is phosphate treated carbon steel (Group 8 = unplated). For alternate finishes/materials replace -PCS/UP in the above part numbers with the following codes: -ZN zinc-nickel (not available for group 8), -S4 304 stainless steel, -S6 316 stainless steel. Consult factory for availability.



HEAVY COVER PLATE

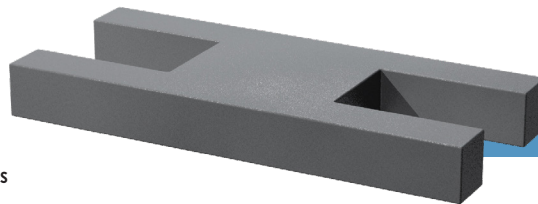


STACKING PLATE

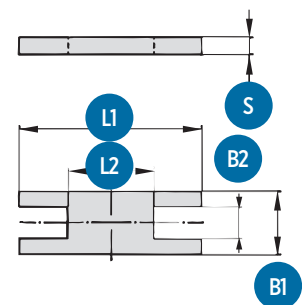
DIMENSIONS IN INCHES

| PART NO. | GROUP | L1 | L2 | B1 | B2 | S |
|------------|-------|------|------|------|------|-----|
| ASP-H3-PCS | 3 | 2.24 | .51 | 1.18 | .60 | .31 |
| ASP-H4-PCS | 4 | 2.76 | 1.02 | 1.18 | .60 | .31 |
| ASP-H5-PCS | 5 | 3.35 | 1.57 | 1.18 | .60 | .31 |
| ASP-H6-PCS | 6 | 4.57 | 2.68 | 1.77 | .68 | .39 |
| ASP-H7-PCS | 7 | 6.02 | 3.78 | 2.36 | .87 | .39 |
| ASP-H8-UP | 8 | 8.11 | 5.12 | 3.15 | 1.10 | .59 |

- Stacking Plate is phosphate treated carbon steel (Group 8 = unplated). For alternate finishes/materials replace -PCS/UP in the above part numbers with the following codes: -ZN zinc-nickel (not available for group 8), -S4 304 stainless steel, -S6 316 stainless steel. Consult factory for availability.



HEAVY STACKING PLATE



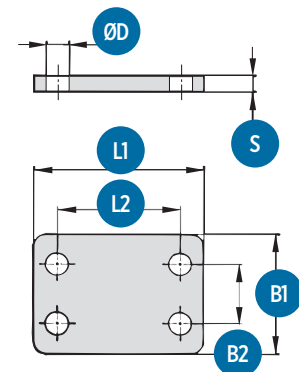
DOUBLE CLAMP

COVER PLATE, DOUBLE CLAMP

DIMENSIONS IN INCHES

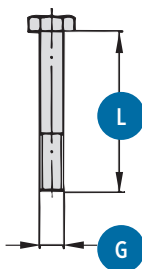
| PART NO. | GROUP | L1 | L2 | B1 | B2 | S | ØD |
|-------------|-------|------|------|------|------|-----|-----|
| ACPD-H3-PCS | 3 | 2.16 | 1.30 | 2.36 | 1.20 | .31 | .43 |
| ACPD-H4-PCS | 4 | 2.76 | 1.77 | 2.36 | 1.20 | .31 | .43 |
| ACPD-H5-PCS | 5 | 3.35 | 2.36 | 2.36 | 1.20 | .31 | .43 |
| ACPD-H6-PCS | 6 | 4.53 | 3.54 | 3.54 | 1.81 | .39 | .55 |
| ACPD-H7-PCS | 7 | 5.98 | 4.80 | 4.72 | 2.40 | .39 | .75 |
| ACPD-H8-UP | 8 | 8.11 | 6.61 | 6.61 | 3.19 | .59 | .87 |

- Cover Plate is phosphate treated carbon steel (Group 8 = unplated). For alternate finishes/materials replace -PCS/UP in the above part numbers with the following codes: -ZN zinc-nickel (not available for group 8), -S4 304 stainless steel, -S6 316 stainless steel. Consult factory for availability.

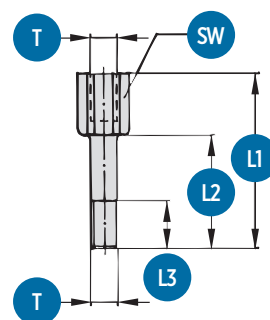




HEAVY HEX HEAD BOLT



HEAVY STACKING BOLT



HEX HEAD BOLT

DIMENSIONS IN INCHES

| PART NO. | GROUP | THREAD | LENGTH |
|--------------|-------|-------------|--------|
| AHNB-H3-U-ZN | 3 | 3/8-16 UNC | 1 3/4 |
| AHNB-H4-U-ZN | 4 | 3/8-16 UNC | 2 1/4 |
| AHNB-H5-U-ZN | 5 | 3/8-16 UNC | 2 3/4 |
| AHNB-H6-U-ZN | 6 | 7/16-14 UNC | 4 |
| AHNB-H7-U-ZN | 7 | 5/8-11 UNC | 5 1/4 |
| AHNB-H8-U-UP | 8 | 3/4-10 UNC | 7 1/2 |

STACKING BOLT

DIMENSIONS IN INCHES

| PART NO. | GROUP | L1 | L2 | L3 | HEX min | THREAD |
|-------------|-------|------|------|------|---------|-------------|
| ASB-H3-U-ZN | 3 | 1.93 | .98 | .59 | .59 | 3/8-16 UNC |
| ASB-H4-U-ZN | 4 | 2.56 | 1.57 | .59 | .59 | 3/8-16 UNC |
| ASB-H5-U-ZN | 5 | 3.03 | 2.01 | .59 | .59 | 3/8-16 UNC |
| ASB-H6-U-ZN | 6 | 4.33 | 3.23 | .71 | .67 | 7/16-14 UNC |
| ASB-H7-U-ZN | 7 | 5.67 | 4.33 | .94 | .83 | 5/8-11 UNC |
| ASB-H8-U-UP | 8 | 7.87 | 5.91 | 1.18 | 1.06 | 3/4-10 UNC |

HEX HEAD BOLT - METRIC

DIMENSIONS IN MM

| PART NO. | GROUP | THREAD | LENGTH |
|--------------|-------|--------|--------|
| AHNB-H3-M-ZN | 3 | M10 | 45 |
| AHNB-H4-M-ZN | 4 | M10 | 60 |
| AHNB-H5-M-ZN | 5 | M10 | 70 |
| AHNB-H6-M-ZN | 6 | M12 | 100 |
| AHNB-H7-M-ZN | 7 | M16 | 130 |
| AHNB-H8-M-UP | 8 | M20 | 190 |

STACKING BOLT - METRIC

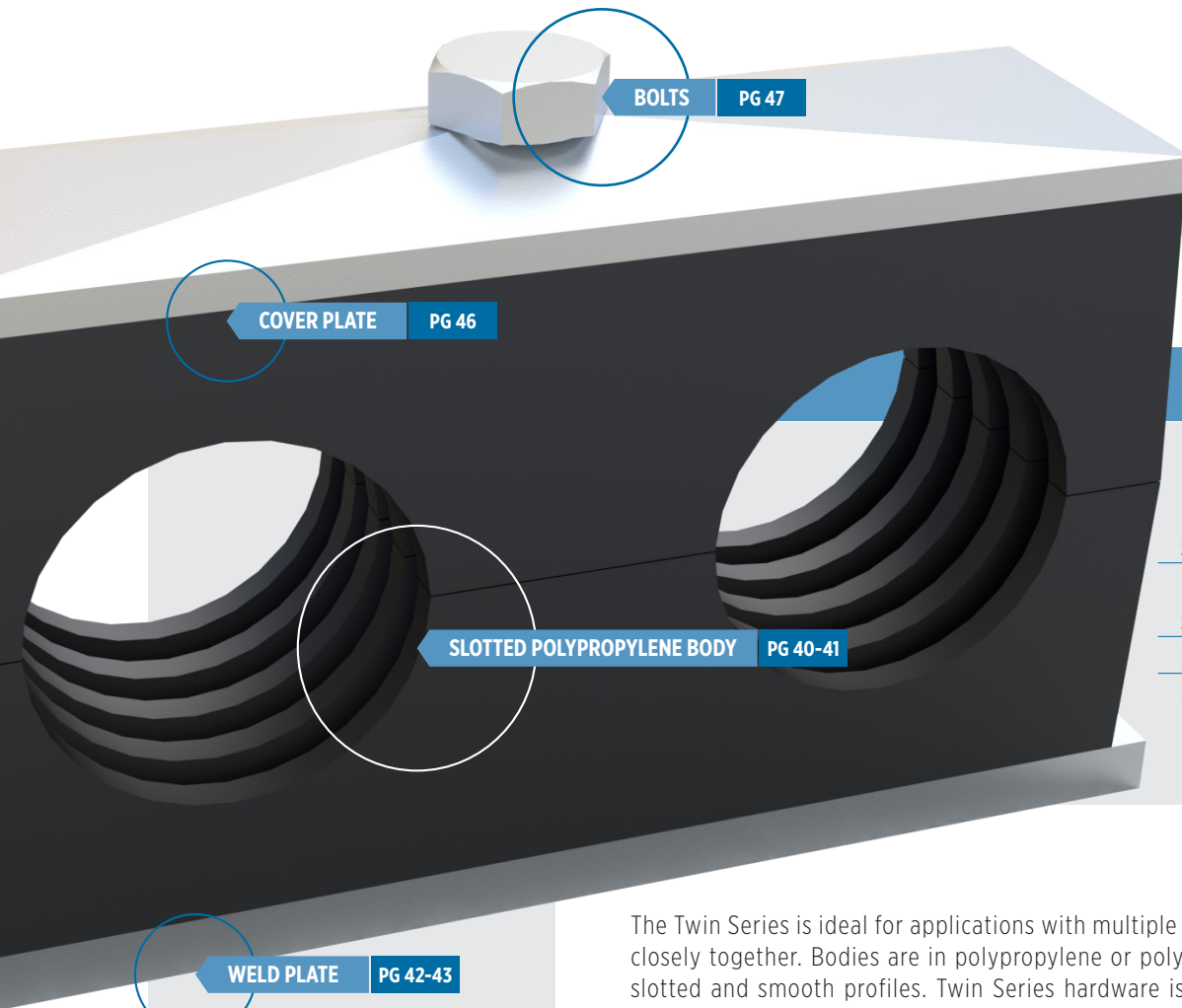
DIMENSIONS IN MM

| PART NO. | GROUP | L1 | L2 | L3 | HEX min | THREAD |
|-------------|-------|-----|-----|----|---------|--------|
| ASB-H3-M-ZN | 3 | 49 | 25 | 15 | 15 | M10 |
| ASB-H4-M-ZN | 4 | 65 | 40 | 15 | 15 | M10 |
| ASB-H5-M-ZN | 5 | 77 | 51 | 15 | 15 | M10 |
| ASB-H6-M-ZN | 6 | 110 | 82 | 18 | 17 | M12 |
| ASB-H7-M-ZN | 7 | 144 | 110 | 24 | 21 | M16 |
| ASB-H8-M-UP | 8 | 200 | 150 | 30 | 27 | M20 |

• Bolt is zinc-nickel plated carbon steel (Group 8 = unplated). For alternate finishes/materials replace -PCS/UP in the above part numbers with the following codes: -S4 304 stainless steel, -S6 316 stainless steel. Consult factory for availability.

• Bolt is zinc-nickel plated carbon steel (Group 8 = unplated). For alternate finishes/materials replace -PCS/UP in the above part numbers with the following codes: -S4 304 stainless steel, -S6 316 stainless steel. Consult factory for availability.

TWIN SERIES



COMPLETE CLAMP KIT

KIT CONTAINS:

- SLOTTED POLYPROPYLENE BODY**
- PHOSPHATE TREATED CARBON**
- STEEL WELD PLATE**
- ZINC-NICKEL PLATED COVER PLATE**
- ZINC-NICKEL PLATED BOLTS**

The Twin Series is ideal for applications with multiple lines needing to be run closely together. Bodies are in polypropylene or polyamide and available in slotted and smooth profiles. Twin Series hardware is available in unplated, phosphate treated, or zinc-nickel plated steel, and 304/316 stainless steel. These choices allow you to select a configuration that is perfectly tailored to your application.

Brennan's Twin Series includes complete clamp kits (bodies plus hardware) and a full line of individual components, so you can assemble the configuration that best meets your needs.

Clamps are available in both imperial and metric sizes, according to groups. Please be sure to choose hardware and bodies from the same group for the best fit.

TWIN SERIES: COMPLETE CLAMP KITS

- Everything you need in one package: clamp body, weld plate, cover plate and bolts with only one part number for simplified ordering.
- Stainless kits are also available, see below for ordering instructions.
- Kit bodies are in polypropylene with slotted profile only.

COMPLETE KIT

FOR TUBING APPLICATIONS

| PART NO. | GROUP | OD (in.) |
|---------------|-------|----------|
| CT-T1-04-CS-A | 1 | 1/4 |
| CT-T1-06-CS-A | | 3/8 |
| CT-T2-08-CS-A | 2 | 1/2 |
| CT-T2-10-CS-A | | 5/8 |
| CT-T3-12-CS-A | 3 | 3/4 |
| CT-T3-14-CS-A | | 7/8 |
| CT-T3-16-CS-A | | 1 |
| CT-T5-20-CS-A | 5 | 1 1/4 |
| CT-T5-24-CS-A | | 1 1/2 |

- Kit contains: slotted polypropylene body, phosphate treated carbon steel weld plate, zinc-plated cover plate and bolt.
- For alternate finishes/materials replace -CS in the above part numbers with the following codes: -S4 304 stainless steel, -S6 316 stainless steel. Consult factory for availability.

COMPLETE KIT

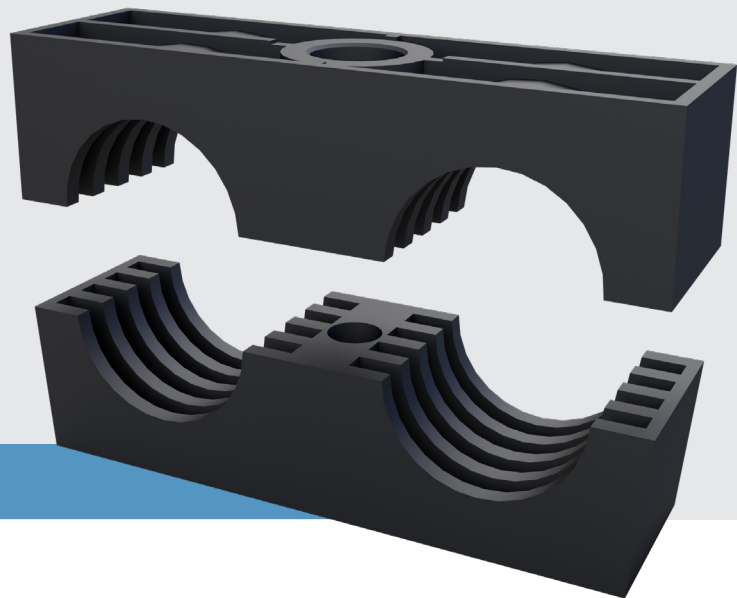
FOR PIPE APPLICATIONS

| PART NO. | GROUP | NB* (in.) |
|---------------|-------|-----------|
| CP-T2-04-CS-A | 2 | 1/4 |
| CP-T2-06-CS-A | | 3/8 |
| CP-T3-08-CS-A | 3 | 1/2 |
| CP-T4-12-CS-A | 4 | 3/4 |
| CP-T5-16-CS-A | 5 | 1 |
| CP-T5-20-CS-A | | 1 1/4 |

- Kit contains: slotted polypropylene body, phosphate treated carbon steel weld plate, zinc-nickel plated cover plate and bolt.
- For alternate finishes/materials replace -CS in the above part numbers with the following codes: -S4 304 stainless steel, -S6 316 stainless steel. Consult factory for availability.
- Nominal bore*

TWIN CLAMP BODIES

- The twin series is available with slotted or smooth profiles in sizes for tube, pipe and hose.
- Brennan slotted profile clamp bodies are a proven product for safe installation of rigid pipes and tubes. Available in common sizes, they have excellent vibration and noise reduction as well as weather resistance.
- Smooth profile clamp bodies are perfect for use with hoses and cables. They have chamfered edges to reduce wear and damage.



PIPE

DIMENSIONS IN INCHES

| PART NO. | NB* | GROUP | L1 | L2 | H | S min | W |
|----------------|-------|-------|------|------|------|-------|------|
| ACB-TP2-P04-PP | 1/4 | 2 | 2.09 | 1.14 | 1.06 | 0.03 | 1.18 |
| ACB-TP2-P06-PP | 3/8 | | | | | | |
| ACB-TP3-P08-PP | 1/2 | 3 | 2.64 | 1.42 | 1.46 | 0.03 | 1.18 |
| ACB-TP4-P12-PP | 3/4 | 4 | 3.15 | 1.77 | 1.57 | 0.03 | 1.18 |
| ACB-TP5-P16-PP | 1 | 5 | 4.17 | 2.2 | 2.09 | 0.03 | 1.18 |
| ACB-TP5-P20-PP | 1 1/4 | | | | | | |

TUBE

DIMENSIONS IN INCHES

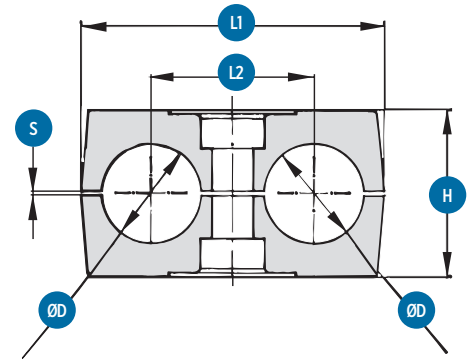
| PART NO. | ØD | GROUP | L1 | L2 | H | S min | W |
|----------------|-------|-------|------|------|------|-------|------|
| ACB-TP1-T04-PP | 1/4 | 1 | 1.42 | 0.79 | 1.06 | 0.02 | 1.18 |
| ACB-TP1-T06-PP | 3/8 | | | | | | |
| ACB-TP2-T08-PP | 1/2 | 2 | 2.09 | 1.14 | 1.06 | 0.03 | 1.18 |
| ACB-TP2-T10-PP | 5/8 | | | | | | |
| ACB-TP3-T12-PP | 3/4 | 3 | 2.64 | 1.42 | 1.46 | 0.03 | 1.18 |
| ACB-TP3-T14-PP | 7/8 | | | | | | |
| ACB-TP3-T16-PP | 1 | | | | | | |
| ACB-TP5-T20-PP | 1 1/4 | 5 | 4.17 | 2.2 | 2.09 | 0.03 | 1.18 |
| ACB-TP5-T24-PP | 1 1/2 | | | | | | |

- Nominal Bore *
- Standard clamp bodies are black Polypropylene with slotted inside surface profile.
- For polyamide clamp bodies substitute -PA for -PP above (ACB-TP1-T04-PP becomes ACB-TP1-T04-PA)

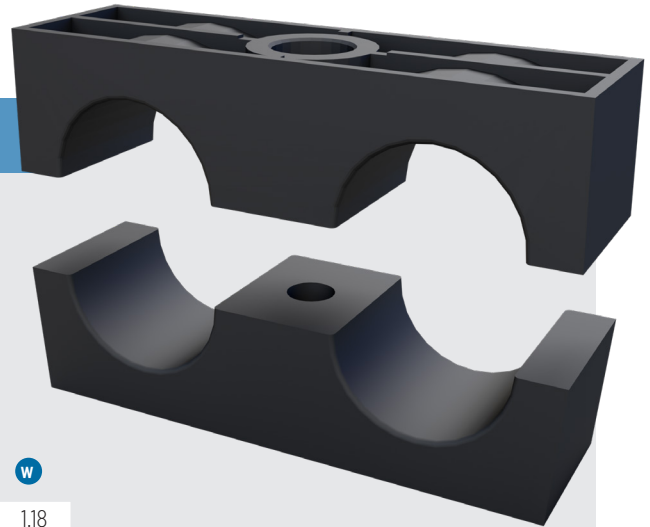
TUBE - METRIC

DIMENSIONS IN MM

| PART NO. | ØD | GROUP | L1 | L2 | H | S _{min} | W |
|-----------------|----|-------|-----|----|----|------------------|----|
| ACB-TP1-TM06-PP | 6 | 1 | 36 | 20 | 27 | 0,6 | 30 |
| ACB-TP1-TM08-PP | 8 | | | | | | |
| ACB-TP1-TM10-PP | 10 | | | | | | |
| ACB-TP1-TM12-PP | 12 | | | | | | |
| ACB-TP2-TM14-PP | 14 | 2 | 53 | 29 | 27 | 0,7 | 30 |
| ACB-TP2-TM15-PP | 15 | | | | | | |
| ACB-TP2-TM18-PP | 18 | | | | | | |
| ACB-TP3-TM20-PP | 20 | 3 | 67 | 36 | 37 | 0,7 | 30 |
| ACB-TP3-TM22-PP | 22 | | | | | | |
| ACB-TP3-TM25-PP | 25 | | | | | | |
| ACB-TP4-TM28-PP | 28 | 4 | 80 | 45 | 40 | 0,7 | 30 |
| ACB-TP4-TM30-PP | 30 | | | | | | |
| ACB-TP5-TM35-PP | 35 | 5 | 106 | 56 | 53 | 0,7 | 30 |
| ACB-TP5-TM40-PP | 40 | | | | | | |
| ACB-TP5-TM42-PP | 42 | | | | | | |



SMOOTH PROFILE



HOSE

DIMENSIONS IN INCHES

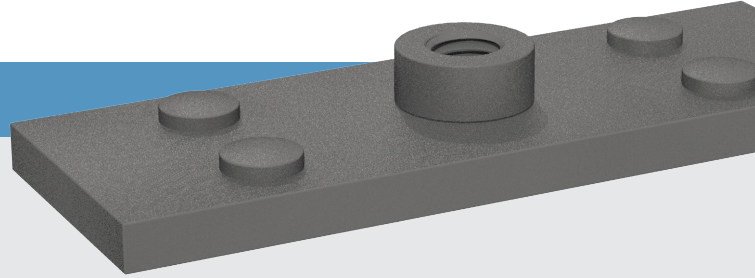
| PART NO. | ØD | GROUP | L1 | L2 | H | W |
|----------------|-------|-------|------|------|------|------|
| ACB-TS1-H04-PP | 1/4 | 1 | 1.42 | .79 | 1.06 | 1.18 |
| ACB-TS1-H05-PP | 5/16 | | | | | |
| ACB-TS1-H06-PP | 3/8 | | | | | |
| ACB-TS2-H08-PP | 1/2 | 2 | 2.09 | 1.14 | 1.06 | 1.18 |
| ACB-TS2-H10-PP | 5/8 | | | | | |
| ACB-TS3-H12-PP | 3/4 | 3 | 2.64 | 1.42 | 1.46 | 1.18 |
| ACB-TS3-H16-PP | 1 | | | | | |
| ACB-TS5-H20-PP | 1 1/4 | 5 | 4.17 | 2.20 | 2.09 | 1.18 |
| ACB-TS5-H24-PP | 1 1/2 | | | | | |

- Standard clamp bodies are black Polypropylene with smooth inside surface profile.
- For polyamide clamp bodies substitute -PA for -PP above (ACB-TS1-H04-PP becomes ACB-TS1-H04-PA)

TWIN WELD PLATES

SINGLE AND GROUP

TWIN SINGLE WELD PLATE



SINGLE

DIMENSIONS IN INCHES

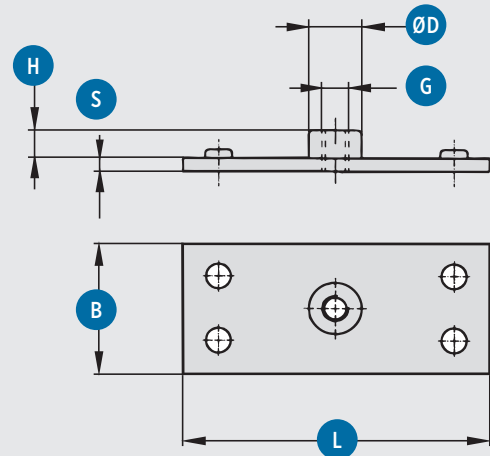
| PART NO. | GROUP | L | B | S | H | ØD | THREAD G |
|--------------|-------|------|------|-----|-----|-----|-------------|
| AWP-T1-U-PCS | 1 | 1.46 | 1.18 | .12 | .26 | .47 | 1/4-20 UNC |
| AWP-T2-U-PCS | 2 | 2.17 | 1.18 | .20 | .24 | .55 | 5/16-18 UNC |
| AWP-T3-U-PCS | 3 | 2.76 | 1.18 | .20 | .24 | .55 | 5/16-18 UNC |
| AWP-T4-U-PCS | 4 | 3.35 | 1.18 | .20 | .24 | .55 | 5/16-18 UNC |
| AWP-T5-U-PCS | 5 | 4.33 | 1.18 | .20 | .24 | .55 | 5/16-18 UNC |

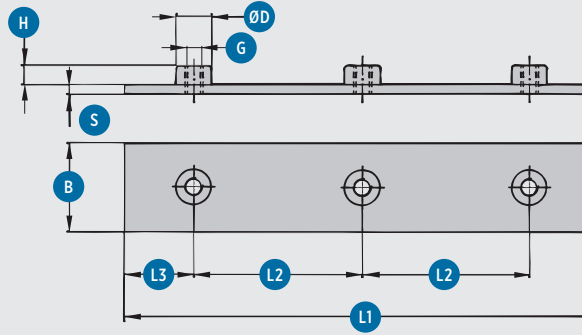
SINGLE - METRIC

DIMENSIONS

| PART NO. | GROUP | L | B | S | H | ØD | THREAD G |
|--------------|-------|-----|----|---|-----|----|----------|
| AWP-T1-M-PCS | 1 | 37 | 30 | 3 | 6,5 | 12 | M6 |
| AWP-T2-M-PCS | 2 | 55 | 30 | 5 | 6 | 14 | M8 |
| AWP-T3-M-PCS | 3 | 70 | 30 | 5 | 6 | 14 | M8 |
| AWP-T4-M-PCS | 4 | 85 | 30 | 5 | 6 | 14 | M8 |
| AWP-T5-M-PCS | 5 | 110 | 30 | 5 | 6 | 14 | M8 |

- Weld plate is phosphate treated carbon steel. For alternate finishes/ materials replace -PCS in the above part numbers with the following codes: -UP unplated carbon steel, -ZN zinc-nickel plated carbon steel, -S4 304 stainless steel, -S6 316 stainless steel. Consult factory for availability.
- Match the group number of your weld plates with your clamp bodies for correct fit.





GROUP WELD PLATE

GROUP

DIMENSIONS IN INCHES

| PART NO. | GROUP | L1 | L2 | L3 | B | S | H | ØD | THREAD G |
|----------------------|----------|-------|------|------|------|-----|-----|-----|-------------|
| AWPG-T1-U-PCS | 1 | 7.72 | 1.57 | .71 | 1.18 | .12 | .26 | .47 | 1/4-20 UNC |
| AWPG-T2-U-PCS | 2 | 11.34 | 2.28 | 1.10 | 1.18 | .20 | .24 | .55 | 5/16-18 UNC |
| AWPG-T3-U-PCS | 3 | 14.09 | 2.83 | 1.37 | 1.18 | .20 | .24 | .55 | 5/16-18 UNC |
| AWPG-T4-U-PCS | 4 | 17.52 | 3.54 | 1.65 | 1.18 | .20 | .24 | .55 | 5/16-18 UNC |
| AWPG-T5-U-PCS | 5 | 21.97 | 4.41 | 2.16 | 1.18 | .20 | .24 | .55 | 5/16-18 UNC |

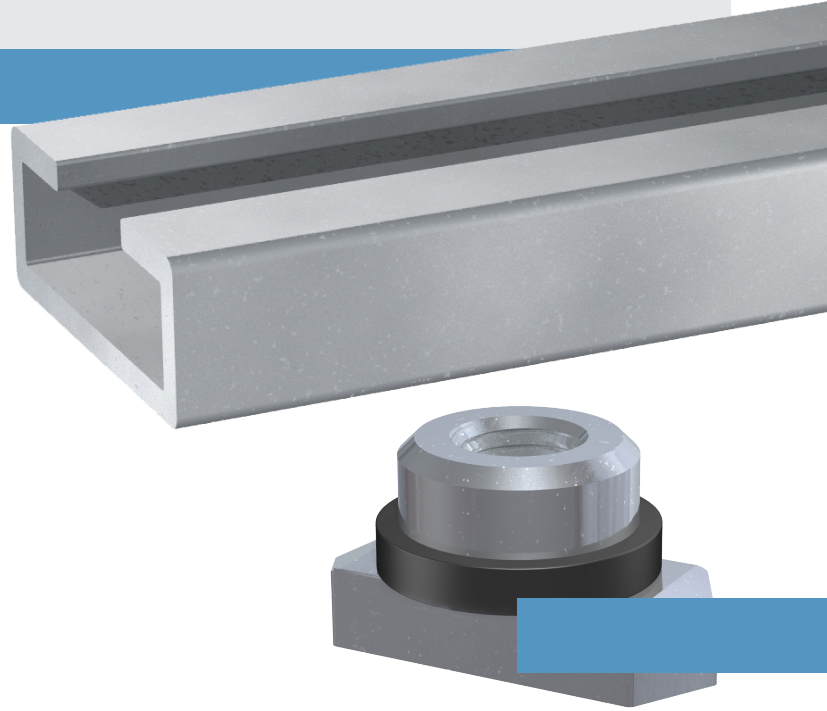
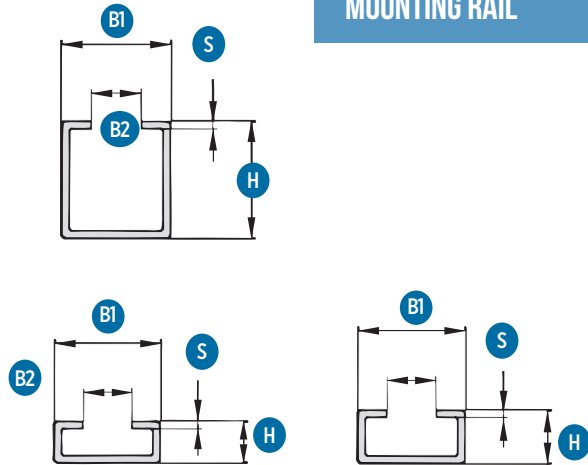
GROUP - METRIC

DIMENSIONS IN INCHES

| PART NO. | GROUP | L1 | L2 | L3 | B | S | H | ØD | THREAD G |
|----------------------|----------|-----|-----|----|----|---|-----|----|----------|
| AWPG-T1-M-PCS | 1 | 196 | 40 | 18 | 30 | 3 | 6,5 | 12 | M6 |
| AWPG-T2-M-PCS | 2 | 288 | 58 | 28 | 30 | 5 | 6 | 14 | M8 |
| AWPG-T3-M-PCS | 3 | 358 | 72 | 35 | 30 | 5 | 6 | 14 | M8 |
| AWPG-T4-M-PCS | 4 | 445 | 90 | 42 | 30 | 5 | 6 | 14 | M8 |
| AWPG-T5-M-PCS | 5 | 558 | 112 | 55 | 30 | 5 | 6 | 14 | M8 |

- Weld plate is phosphate treated carbon steel. For alternate finishes/materials replace -PCS in the above part numbers with the following codes: -UP unplated carbon steel, -ZN zinc-nickel plated carbon steel, -S4 304 stainless steel, -S6 316 stainless steel. Consult factory for availability.
- Match the group number of your weld plates with your clamp bodies for correct fit.

MOUNTING RAIL



MOUNTING RAIL

DIMENSIONS IN INCHES/MM

| PART NO. | LENGTH | | | | |
|----------------------|----------|---------|--------|--------|-------|
| AMR-SR1-UP-2M | 2 Meters | .43/11 | 1.1/28 | .43/11 | .08/2 |
| AMR-SR1-UP-1M | 1 Meter | | | | |
| AMR-SR2-UP-2M | 2 Meters | .55/14 | 1.1/28 | .43/11 | .08/2 |
| AMR-SR2-UP-1M | 1 Meter | | | | |
| AMR-SR3-UP-2M | 2 Meters | 1.18/30 | 1.1/28 | .43/11 | .08/2 |
| AMR-SR3-UP-1M | 1 Meter | | | | |

- Mounting rail is unplated carbon steel. For alternate finishes/materials replace -UP in the above part numbers with the following codes: -ZN zinc-nickel plated carbon steel, -S4 304 stainless steel, -S6 316 stainless steel. Consult factory for availability.
- Compatible with all standard and twin clamp components from groups 1-8.

RAIL NUT

DIMENSIONS IN INCHES

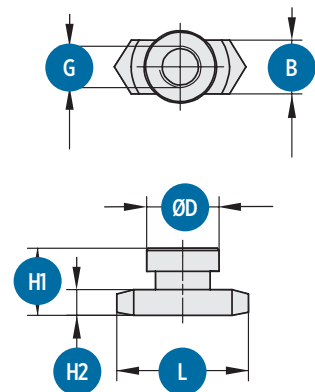
| PART NO. | GROUP | THREAD G | L | B | H1 | H2 | ØD |
|------------------------|---------|-------------|------|-----|-----|-----|-----|
| AHRN-S-U-ZN | 1 | 1/4-20 UNC | 1.00 | .40 | .53 | .22 | .47 |
| AHRN-T2345-U-ZN | 2,3,4,5 | 5/16-18 UNC | 1.00 | .41 | .51 | .20 | .55 |

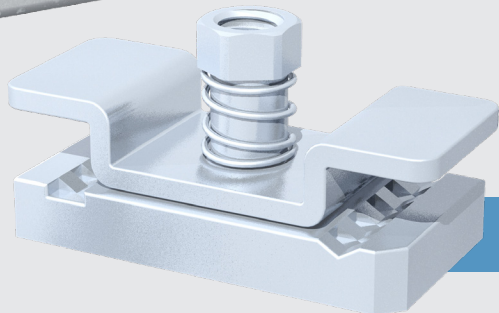
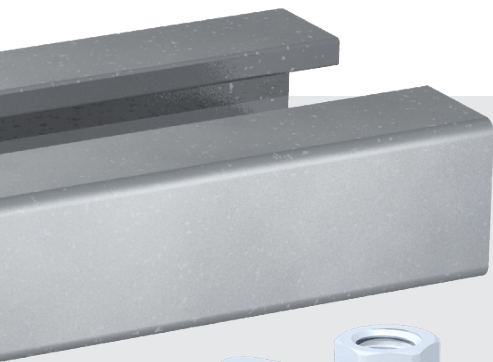
RAIL NUT - METRIC

DIMENSIONS IN MM

| PART NO. | GROUP | THREAD G | L | B | H1 | H2 | ØD |
|------------------------|---------|----------|------|------|------|-----|----|
| AHRN-S-M-ZN | 1 | M6 | 25.5 | 10.2 | 13.5 | 5.5 | 12 |
| AHRN-T2345-M-ZN | 2,3,4,5 | M8 | 25.5 | 10.4 | 13 | 5 | 14 |

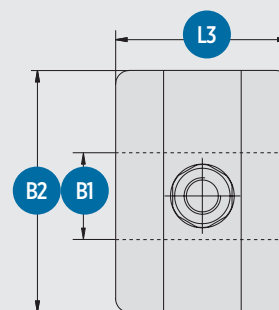
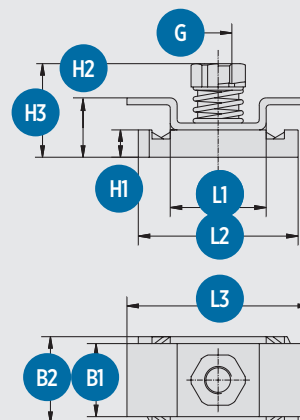
- Rail Nut is zinc-nickel plated carbon steel. For alternate finishes/materials replace -ZN in the above part numbers with the following codes: -S4 304 stainless steel, -S6 316 stainless steel, -UP unplated carbon steel. Consult factory for availability.





CHANNEL ADAPTER

TWIN RAIL NUT



CHANNEL ADAPTER

DIMENSIONS IN INCHES

| PART NO. | GROUP | THREAD | L1 | L2 | L3 | B1 | B2 | H1 | H2 | H3 |
|---------------|-------|-------------|-----|------|------|------|-----|-----|-----|-----|
| ASCA-T23-U-ZN | 2,3 | 5/16-18 UNC | .83 | 1.38 | 1.50 | 2.09 | .75 | .35 | .67 | .93 |
| ASCA-T45-U-ZN | 4,5 | 5/16-18 UNC | .83 | 1.38 | 1.50 | 3.15 | .75 | .3 | .67 | .93 |

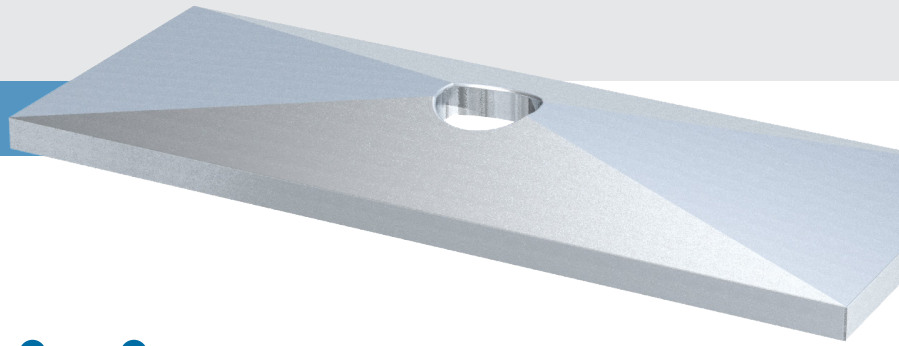
CHANNEL ADAPTER - METRIC

DIMENSIONS IN MM

| PART NO. | GROUP | THREAD | L1 | L2 | L3 | B1 | B2 | H1 | H2 | H3 |
|---------------|-------|--------|----|----|----|----|----|----|----|------|
| ASCA-T23-M-ZN | 2,3 | M8 | 21 | 35 | 38 | 53 | 19 | 9 | 17 | 23.5 |
| ASCA-T45-M-ZN | 4,5 | M8 | 21 | 35 | 38 | 80 | 19 | 9 | 17 | 23.5 |

- Channel Adapter is zinc-nickel plated carbon steel. For alternate finishes/materials replace -ZN in the above part numbers with the following codes: -S6 316 stainless steel. Consult factory for availability.
- Adapter is for use with standard channel rails available elsewhere.

TWIN COVER PLATE

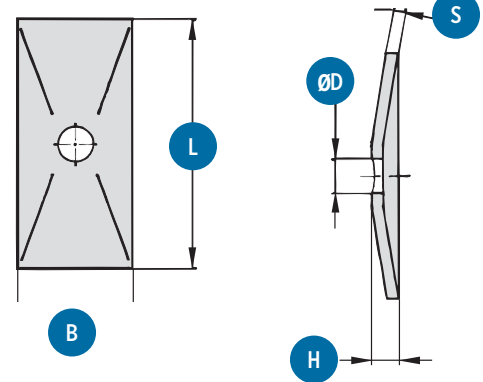


COVER PLATE

DIMENSIONS IN INCHES

| PART NO. | GROUP | L | B | H | S | ØD |
|-----------|-------|------|------|-----|-----|-----|
| ACP-T1-ZN | 1 | 1.34 | 1.18 | .28 | .12 | .28 |
| ACP-T2-ZN | 2 | 2.05 | 1.18 | .28 | .12 | .35 |
| ACP-T3-ZN | 3 | 2.56 | 1.18 | .28 | .12 | .35 |
| ACP-T4-ZN | 4 | 3.11 | 1.18 | .28 | .12 | .35 |
| ACP-T5-ZN | 5 | 4.02 | 1.18 | .28 | .12 | .35 |

- Cover Plate is zinc-nickel plated carbon steel. For alternate finishes/materials replace -ZN in the above part numbers with the following codes: -S4 304 stainless steel, -S6 316 stainless steel. Consult factory for availability.



TWIN STACKING PLATE

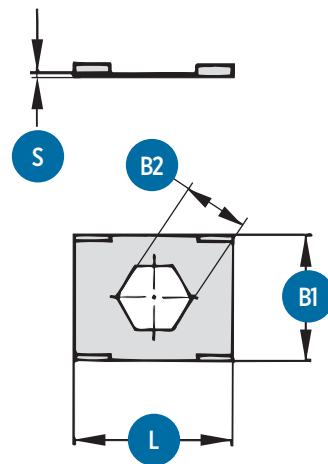


STACKING PLATE

DIMENSIONS IN INCHES

| PART NO. | GROUP | L | B1 | B2 | S |
|--------------|---------|------|-----|-----|-----|
| ASP-T1-ZN | 1 | 1.06 | .86 | .44 | .02 |
| ASP-T2345-ZN | 2,3,4,5 | 1.06 | .86 | .48 | .02 |

- Stacking Plate is zinc-nickel plated carbon steel. For alternate finishes/materials replace -ZN in the above part numbers with the following codes: -S4 304 stainless steel, -S6 316 stainless steel. Consult factory for availability.



HEX HEAD BOLT

DIMENSIONS IN INCHES

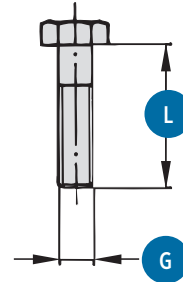
| PART NO. | GROUP | THREAD | LENGTH |
|--------------|-------|-------------|--------|
| AHHB-T1-U-ZN | 1 | 1/4-20 UNC | 13/8 |
| AHHB-T2-U-ZN | 2 | 5/16-18 UNC | 13/8 |
| AHHB-T3-U-ZN | 3 | 5/16-18 UNC | 13/4 |
| AHHB-T4-U-ZN | 4 | 5/16-18 UNC | 2 |
| AHHB-T5-U-ZN | 5 | 5/16-18 UNC | 2 1/2 |

HEX HEAD BOLT - METRIC

DIMENSIONS IN MM

| PART NO. | GROUP | THREAD | LENGTH |
|--------------|-------|--------|--------|
| AHHB-T1-M-ZN | 1 | M6 | 35 |
| AHHB-T2-M-ZN | 2 | M8 | 35 |
| AHHB-T3-M-ZN | 3 | M8 | 45 |
| AHHB-T4-M-ZN | 4 | M8 | 50 |
| AHHB-T5-M-ZN | 5 | M8 | 60 |

TWIN HEX HEAD BOLT



- Bolt is zinc-nickel plated carbon steel. For alternate finishes/materials replace -ZN in the above part numbers with the following codes: -S4 304 stainless steel, -S6 316 stainless steel. Consult factory for availability.

STACKING BOLT

DIMENSIONS IN INCHES

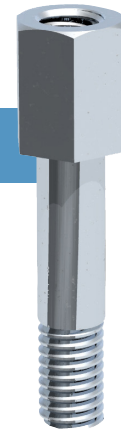
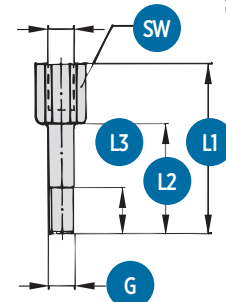
| PART NO. | GROUP | THREAD | L1 | L2 | L3 min | HEX |
|-------------|-------|-------------|------|------|--------|-----|
| ASB-T1-U-ZN | 1 | 1/4-20 UNC | 1.33 | .78 | .47 | .43 |
| ASB-T2-U-ZN | 2 | 5/16-18 UNC | 1.30 | .78 | .47 | .47 |
| ASB-T3-U-ZN | 3 | 5/16-18 UNC | 1.73 | 1.14 | .47 | .47 |
| ASB-T4-U-ZN | 4 | 5/16-18 UNC | 1.92 | 1.33 | .47 | .47 |
| ASB-T5-U-ZN | 5 | 5/16-18 UNC | 2.40 | 1.81 | .47 | .47 |

STACKING BOLT - METRIC

DIMENSIONS IN MM

| PART NO. | GROUP | L1 | L2 | L3 | HEX min | THREAD |
|-------------|-------|----|----|----|---------|--------|
| ASB-T1-M-ZN | 1 | M6 | 34 | 20 | 12 | 11 |
| ASB-T2-M-ZN | 2 | M8 | 33 | 20 | 12 | 12 |
| ASB-T3-M-ZN | 3 | M8 | 44 | 29 | 12 | 12 |
| ASB-T4-M-ZN | 4 | M8 | 49 | 34 | 12 | 12 |
| ASB-T5-M-ZN | 5 | M8 | 61 | 46 | 12 | 12 |

TWIN STACKING BOLT



- Bolt is zinc-nickel plated carbon steel. For alternate finishes/materials replace -ZN in the above part numbers with the following codes: -S4 304 stainless steel, -S6 316 stainless steel. Consult factory for availability.

US DISTRIBUTION CENTERS

ATLANTA TOLL FREE: 800.458.1988
FAX: 770.987.0926

CLEVELAND TOLL FREE: 800.331.1523
FAX: 440.248.9375

DALLAS TOLL FREE: 800.443.9937
FAX: 972.660.6638

HOUSTON TOLL FREE: 800.443.9937
FAX: 713.808.9477

LOS ANGELES TOLL FREE: 800.942.5321
FAX: 949.595.0933

SEATTLE TOLL FREE: 800.445.7107
FAX: 253.826.4884

CANADIAN DISTRIBUTION CENTERS

CALGARY TOLL FREE: 844.379.9300
FAX: 403.279.4583

MONTREAL PHONE: 514.339.1139
FAX: 514.339.2601

TORONTO TOLL FREE: 855.267.9013
FAX: 905.673.8788

VANCOUVER PHONE: 604.420.6540
FAX: 604.420.6545

WINNIPEG PHONE: 204.694.8068
FAX: 204.694.8113

INT'L DISTRIBUTION CENTERS

BIRMINGHAM, UK PHONE: 01922 650039
FAX: 01922 626179

SHANGHAI, CN PHONE: +86 21 57391155
FAX: 86 21 57390688



CORPORATE HEADQUARTERS
6701 COCHRAN ROAD
OLON, OHIO 44139 USA

DOMESTIC MANUFACTURING
26420 CENTURY CORNERS PARKWAY
CLEVELAND, OHIO 44132 USA

PHONE: 440.248.1880
TOLL FREE: 888.331.1523
FAX: 440.248.7282

CANADIAN MANUFACTURING
290 COURTNEYPARK DRIVE EAST
MISSISSAUGA, ON - L5T 2S5

CHINA MANUFACTURING
NO. 5, HANYUN AVENUE,
NINGJIANG INDUSTRIAL PARK, XUZHOU, CHINA

UK MANUFACTURING
WIGWAM LANE
HUCKNALL NOTTINGHAM NG15 7SZ, UK



Certified to
ISO 9001:2015



ISO 9001
BUREAU VERITAS
Certification



brennaninc.com